

Milwaukee Makerspace

Fall 2016 Member Survey

Contents

- Survey size..... 4
- Demographics 4
 - Age 4
 - Gender 4
 - Where you come from 4
 - Ethnicity 6
- Why Milwaukee Makerspace..... 7
 - What do you come to Milwaukee Makerspace for?..... 7
 - What tools/areas have you personally used in the past 6 months? 7
 - What tools are you interested in using in the future?..... 9
 - How often do you come to the space? 10
- Building Space – We’re running out! 11
 - Free Storage vs Room for Tools and Projects 11
 - Other suggestions: 12
 - Are you interested in storage space you don't currently have, and if so, what kind? 13
 - Section 4, Part 5 of the By-Laws state that Milwaukee Makerspace "...reserves the right to limit membership based on the capacity of the space." Membership in November 2016 is approximately 280. At what point should a limit be considered, if at all? 14
 - Do you have any ideas for how to solve the space crunch besides what is listed above?..... 14
- Member Feedback 17
 - Name something that Milwaukee Makerspace has done well in the past year..... 17
 - Name something that Milwaukee Makerspace could improve on in the future. 20
 - What would you like to see Milwaukee Makerspace do more of in the upcoming year? 23
 - What would you like to see Milwaukee Makerspace do less of in the next year? 25
- Community..... 27
 - How safe do you feel when you are at Milwaukee Makerspace? 27
 - How much do you feel you can trust other Milwaukee Makerspace members?..... 27
 - How likely are you to recommend Milwaukee Makerspace to others? 27

Are you satisfied with the COSTS associated with membership?.....	28
Volunteerism.....	28
About how often do you help out at Space Improvement Day?	28
What would make you want to help at space improvement day?.....	28
Do you own tools at the space that others use?	31
Are you a trainer for tools at the space?	31
Are you an area champion?	31
How would you suggest we motivate members to help with upkeep of the space?.....	32
Priorities.....	35
Attracting New Members	35
Retaining Current Members	35
Group Projects	36
Makerspace Events and Meetings.....	36
Hosting Events By Other Groups.....	36
Community/Neighborhood Involvement	37
Participating in Maker Faire Events	37
Training on Tools and Equipment.....	37
Acquiring New Tools and Equipment.....	38
Orientation Classes/Videos.....	38
Available Workspace.....	38
Available Storage Space	39
Safety	39
Updating the Wiki	39
Making blog posts	40
Participating on the Mailing List(s)	40
Group Finances, Budgets and Planning	40
Group Discounts on Tools/Materials, Bulk Orders	40
Any priorities you would like to elaborate on?.....	41
Milwaukee MakerFaire Participation.....	42
Did you attend Milwaukee MakerFaire in 2016?	42
Did you exhibit or vend at Milwaukee MakerFaire in 2016?.....	42
Do you intend to attend Milwaukee MakerFaire next year?	43
What is the best way for the Makerspace to participate in Milwaukee MakerFaire?	43

Other responses.....	43
MakerFaire Budget	45
MakerFaire Stipends	45
Other responses.....	46
Specific Spending Initiatives.....	48
Repaving the parking lot.....	48
Awnings over entrances.....	48
Funding Priorities	49
Improve common spaces.....	49
Improve exterior	49
Supplies for various areas	50
Small tool purchases	50
Large tool purchases.....	50
Building maintenance	51
Purchase the building	51
Space expansion to a second location	51
Infrastructure improvements	52
Cater public events	52
Other (specify)	52
Governance.....	53
How satisfied are you with decisions the Board has made in the past year?	53
How satisfied are you with the Board's transparency in the past year?	53
How satisfied are you with the way discussions have been handled by the Board in the past year? ...	54
How comfortable are you presenting proposals and ideas to the Board of Directors?	54
How comfortable are you presenting proposals and ideas to the Membership as a whole?	54
Are you satisfied with the policies and procedures outlined in the Milwaukee Makerspace By-Laws and member handbook?.....	55

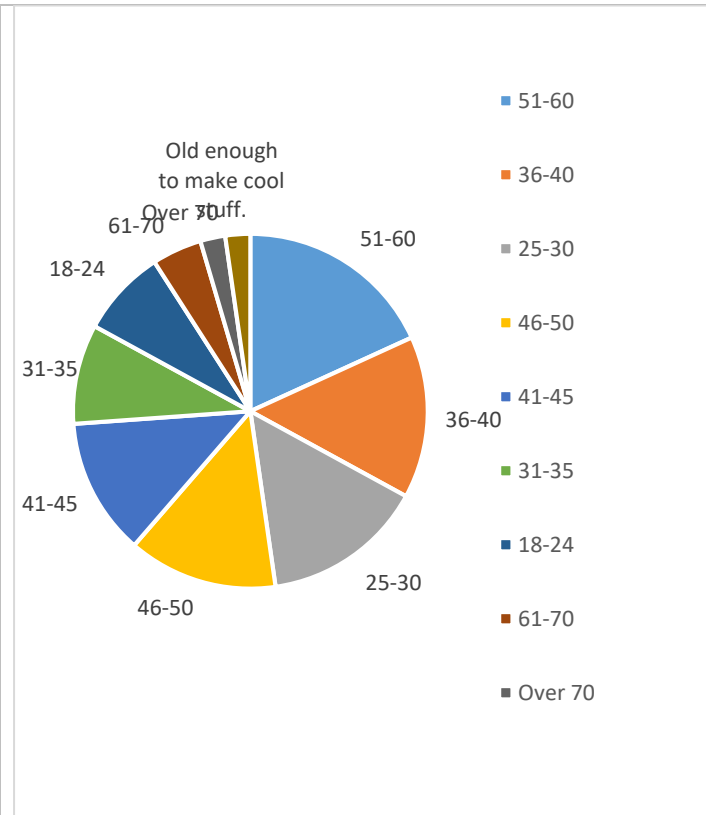
Survey size

The survey was sent to 278 active members of MMS, and responses were received from 89 members. The response percentage was 32% of the members.

Demographics

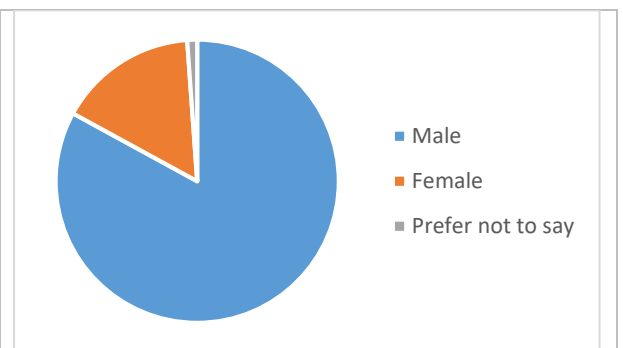
Age

Age	Count
51-60	16
36-40	13
25-30	13
46-50	12
41-45	11
31-35	8
18-24	7
61-70	4
Over 70	2
Old enough to make cool stuff.	2
Grand Total	88



Gender

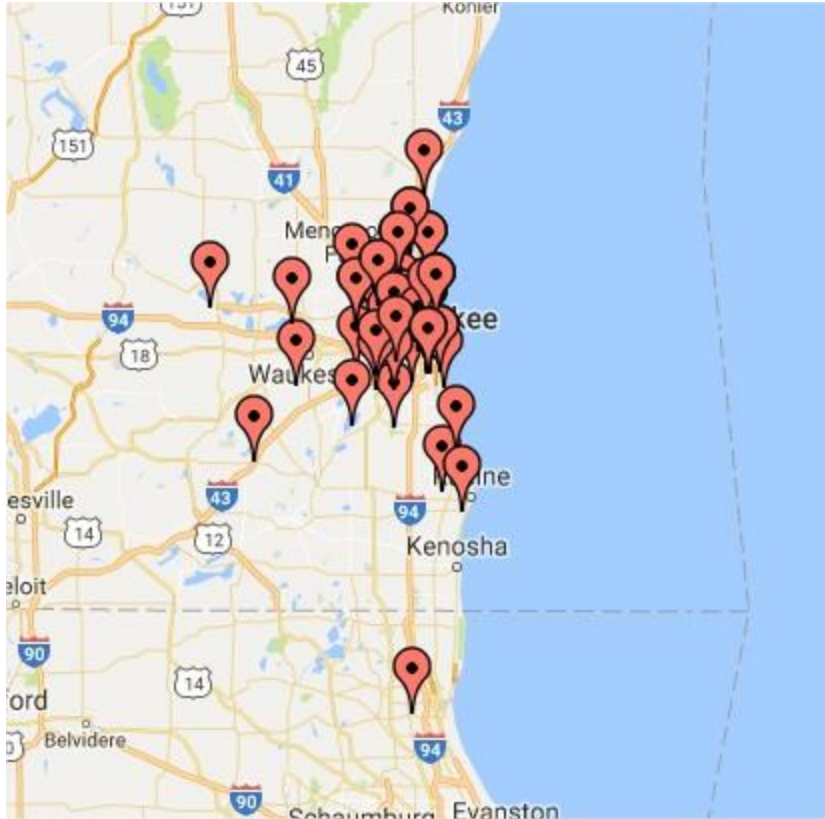
Gender	Count
Male	73
Female	14
Prefer not to say	1
Grand Total	88



Where you come from

Zip Code	Count
53207	21

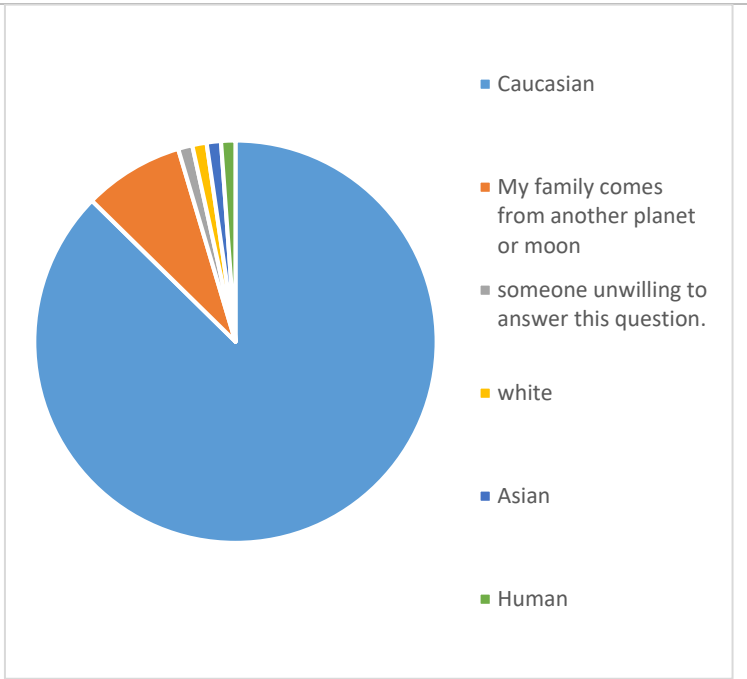
53211	5
53220	4
53217	3
53202	3
53223	3
53213	2
53204	2
53092	2
53225	2
53233	2
53208	2
53226	2
53235	2
53129	2
53005	2
53212	2
53066	1
60048	1
53024	1
53210	1
53151	1
53120	1
53228	1
53051	1
53403	1
53130	1
53221	1
53214	1
53189	1
53215	1
53227	1
53216	1
53072	1
53132	1
53402	1
53218	1
53406	1
53219	1
53110	1
53150	1
Grand Total	85



<http://www.easymapmaker.com/map/98041169c41c761b6c2ddf8948bbdcea>

Ethnicity

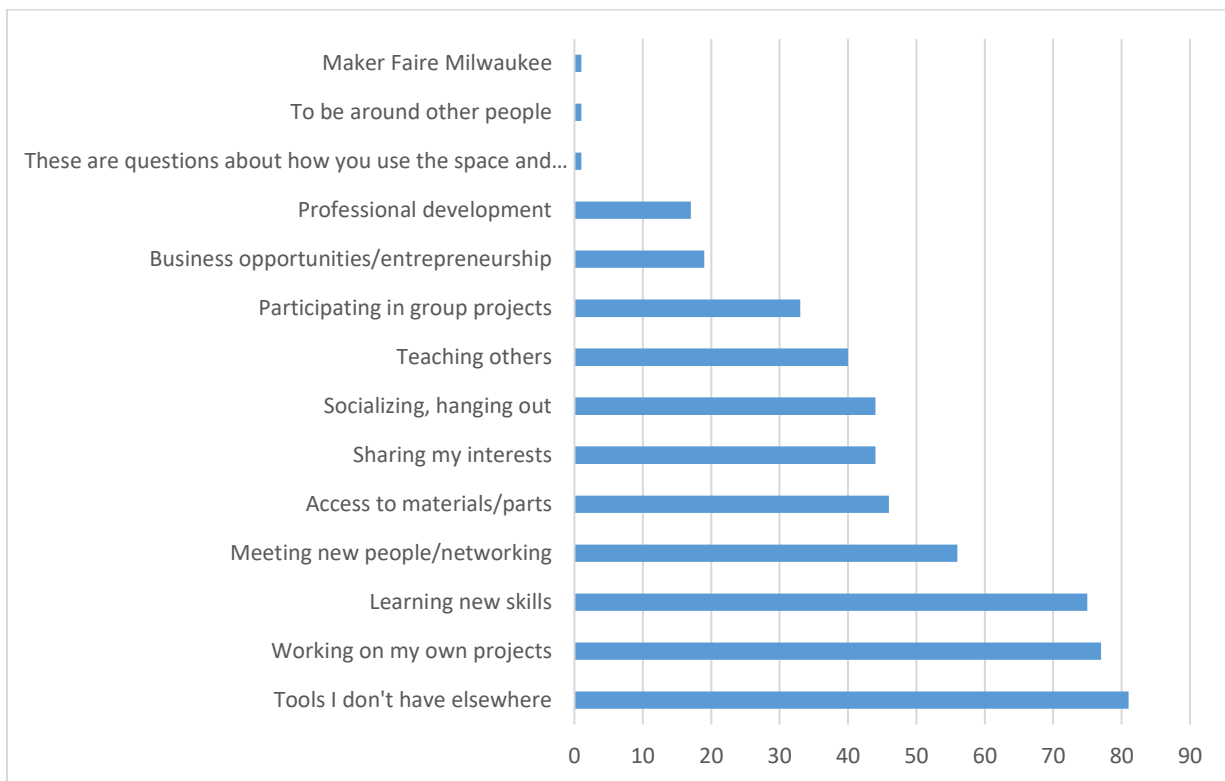
Ethnicity	Count
Caucasian	76
My family comes from another planet or moon	7
someone unwilling to answer this question.	1
white	1
Asian	1
Human	1
Grand Total	87



Why Milwaukee Makerspace

What do you come to Milwaukee Makerspace for?

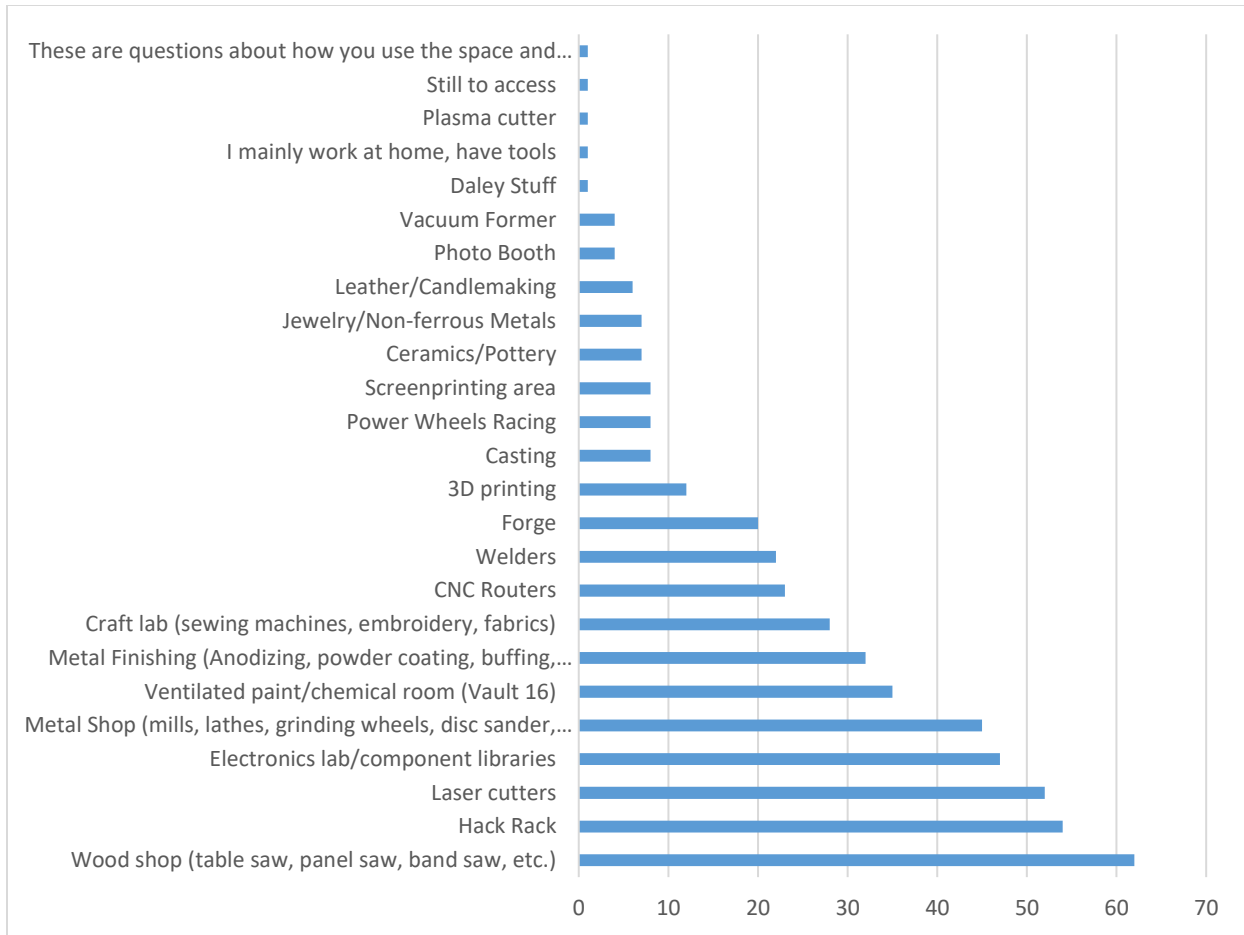
Tools I don't have elsewhere	81
Working on my own projects	77
Learning new skills	75
Meeting new people/networking	56
Access to materials/parts	46
Sharing my interests	44
Socializing, hanging out	44
Teaching others	40
Participating in group projects	33
Business opportunities/entrepreneurship	19
Professional development	17
These are questions about how you use the space and what you find useful about the maker space.	1
To be around other people	1
Maker Faire Milwaukee	1



What tools/areas have you personally used in the past 6 months?

Wood shop (table saw, panel saw, band saw, etc.)	62
Hack Rack	54
Laser cutters	52
Electronics lab/component libraries	47

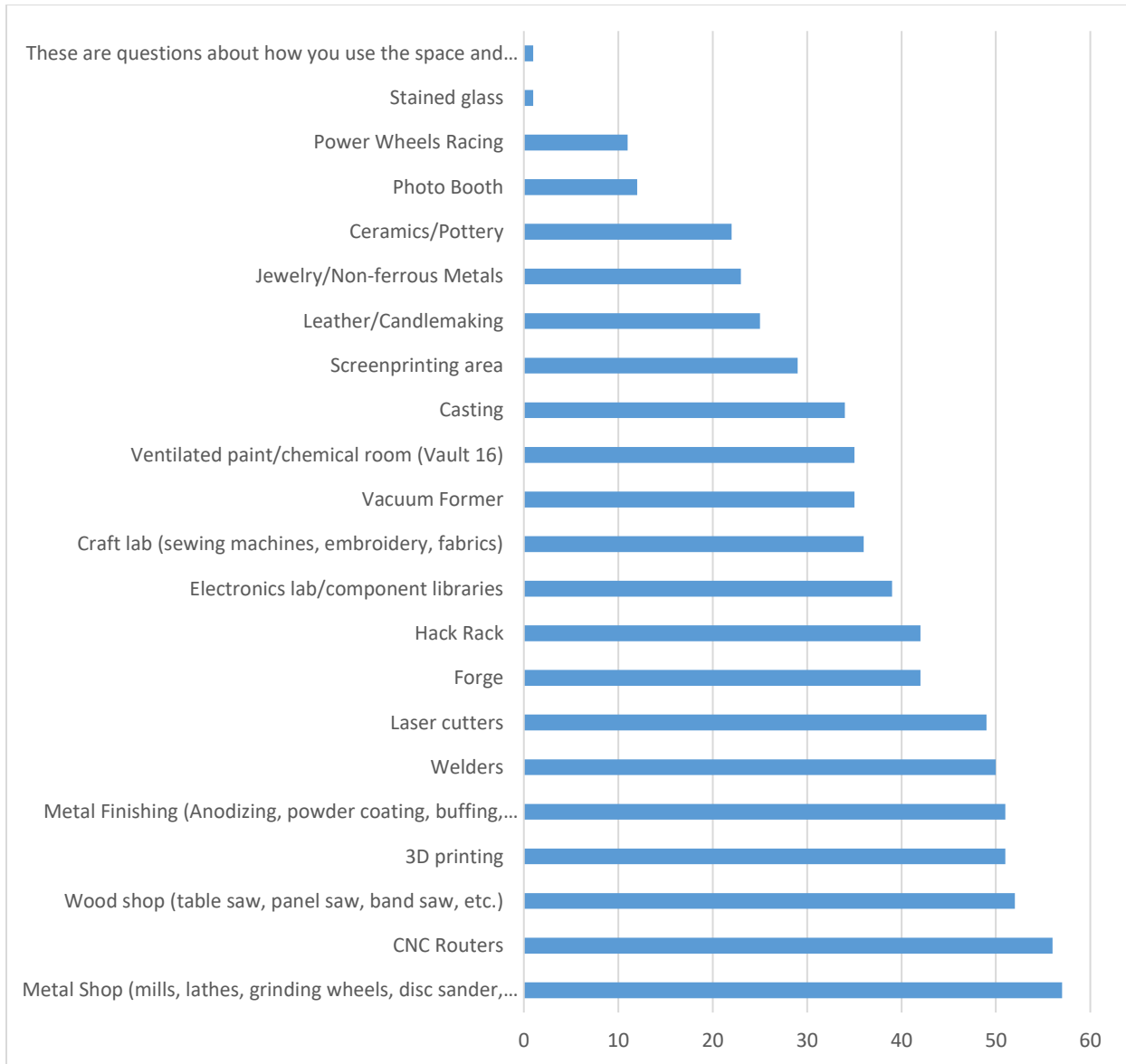
Metal Shop (mills, lathes, grinding wheels, disc sander, Tormach)	45
Ventilated paint/chemical room (Vault 16)	35
Metal Finishing (Anodizing, powder coating, buffing, polishing, sand blasting)	32
Craft lab (sewing machines, embroidery, fabrics)	28
CNC Routers	23
Welders	22
Forge	20
3D printing	12
Casting	8
Power Wheels Racing	8
Screenprinting area	8
Ceramics/Pottery	7
Jewelry/Non-ferrous Metals	7
Leather/Candlemaking	6
Photo Booth	4
Vacuum Former	4
Daley Stuff	1
I mainly work at home, have tools	1
Plasma cutter	1
Still to access	1
These are questions about how you use the space and what you find useful about the maker space.	1



What tools are you interested in using in the future?

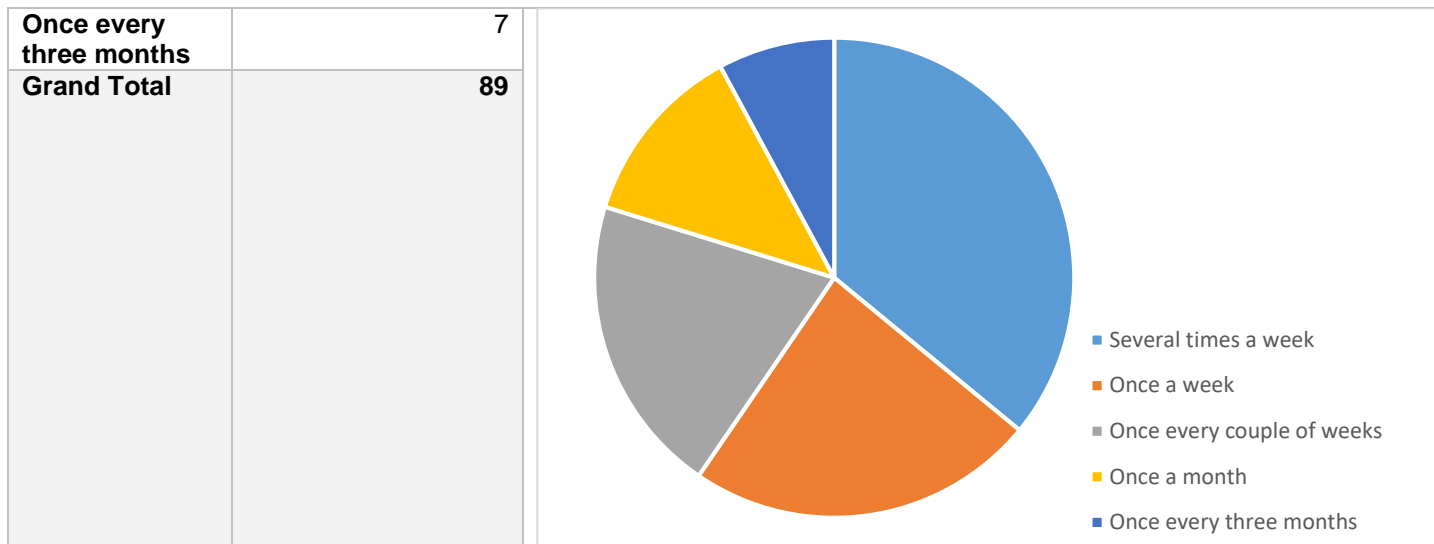
Metal Shop (mills, lathes, grinding wheels, disc sander, Tormach)	57
CNC Routers	56
Wood shop (table saw, panel saw, band saw, etc.)	52
3D printing	51
Metal Finishing (Anodizing, powder coating, buffing, polishing, sand blasting)	51
Welders	50
Laser cutters	49
Forge	42
Hack Rack	42
Electronics lab/component libraries	39
Craft lab (sewing machines, embroidery, fabrics)	36
Vacuum Former	35
Ventilated paint/chemical room (Vault 16)	35
Casting	34
Screenprinting area	29
Leather/Candlemaking	25
Jewelry/Non-ferrous Metals	23
Ceramics/Pottery	22

Photo Booth	12
Power Wheels Racing	11
Stained glass	1
These are questions about how you use the space and what you find useful about the maker space.	1



How often do you come to the space?

Several times a week	32
Once a week	21
Once every couple of weeks	18
Once a month	11

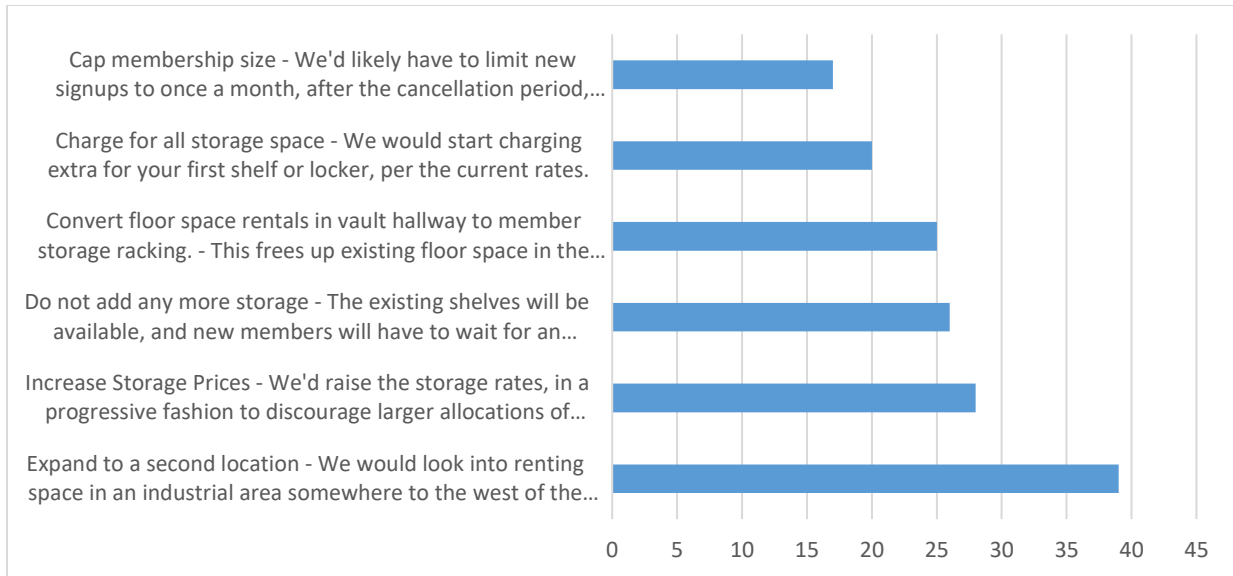


Building Space – We’re running out!

Free Storage vs Room for Tools and Projects

The Makerspace provides free storage for all members, and add-on rental storage at a cost. With the growth of the membership throughout 2016, MMS has had to add a large amount of storage just to keep up with free storage. The board is concerned that we are now increasing the amount of space taken up by storage at the detriment of making space available for tools and building. How do you think MMS should address this situation?

Expand to a second location - We would look into renting space in an industrial area somewhere to the west of the current building, to compliment our current facilities.	39
Increase Storage Prices - We'd raise the storage rates, in a progressive fashion to discourage larger allocations of storage, hypothetically: Floor/Vault storage: \$1/sqft -> \$3/sqft, Pallet Storage: \$6 -> \$12. Shelf storage: \$4 -> \$6	28
Do not add any more storage - The existing shelves will be available, and new members will have to wait for an opening.	26
Convert floor space rentals in vault hallway to member storage racking. - This frees up existing floor space in the east room. - Current renters would have to remove their property from the building.	25
Charge for all storage space - We would start charging extra for your first shelf or locker, per the current rates.	20
Cap membership size - We'd likely have to limit new signups to once a month, after the cancellation period, not all applicants would necessarily be able to join.	17



Other suggestions:

Reduce the storage that each member gets.

Token discount for members who forgo their free storage space.

Along with increasing storage prices, limit or lower the limit of space per person or by timeline

Expand at the current location...up? down? A little out here and there?

These are questions about how you use the space and what you find useful about the maker space.

Add \$10/mo to memberships for people to use both spaces if expansion happens.

Personally, I think it needs to happen. And a major clean up of areas. Keep popularized items out and weed out less used items and eventually pitch them. This creates more space versus tons of materials hanging out and the place looking less than it could. Large items should cost more to store.

Require verification of storage space every quarter. Members should have to sign and turn in a physical card from their storage location. This would show that members are coming in and using the space rather than just emailing that it's in use and not coming in.

Offer 1 week parking in a shelf for projects. This reduces the need for individual storage.

Allow members to pick where their storage space funds go.

Build a mezzanine for storage.

I like the last option, but do it slowly, as vaults free up, move them into a vault. They don't get kicked out... once they leave it becomes member storage racking or member GROUP Projects - like powerwheels and dalicks.

We shouldn't penalize big projects over small ones too heavily or we'll lose a lot of the cool things we show off at Maker Faire etc. How about this. Provide smaller, more granular types for free (14" x 3" shelves, Flat storage like the one for large timbers, and another one for things that need to lay flat in the crafts area, maybe on one of those spring-loaded stacked drying racks?) all with some added security coverage but not under individual lock and key. Then charge for lockable spaces beginning with 1'x1' shoe lockers on up. That way tooling and other small stuff can be secured at a minimal cost, but space-hogs can be priced out. To counter the loss of working space, why not carve out several large-ish common work spaces which can be "granted" a bit like the area where the boat is being built to applicants who have a project in mind *and* a specific deadline they can commit to.

I have a lot of mixed feelings about this, the more well-to-do financial people it will not affect at all. The less financially secure members will lose their spaces. I have not seen a correlation between makers and financial standing. I fear this will drive the lower income active makers and hurt the space as a whole.

Build on to the existing building in the north yard?

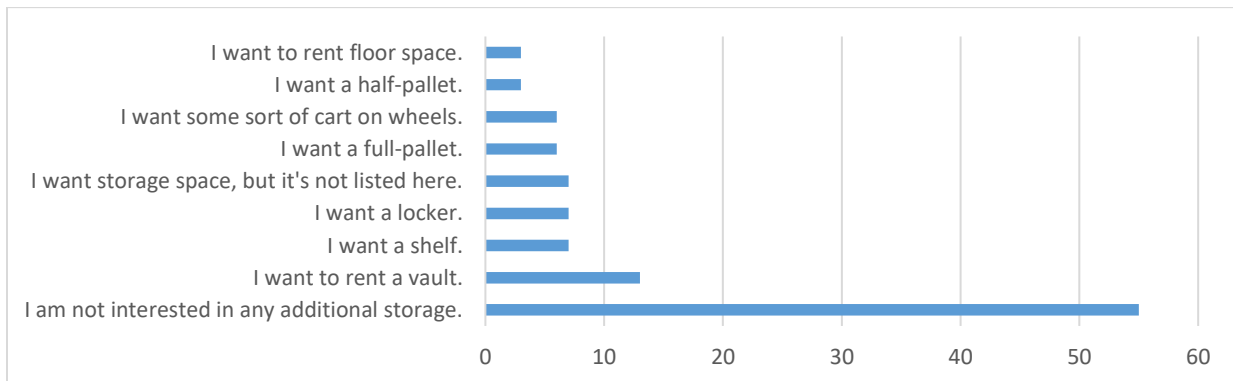
I agree w/ a -discussion- to expand to a second location

Raise rates on lockers with idle hardware (e.g., projects abandoned or stalled after 2 or 3 months). Or reduce membership dues across the board and make up difference by charging for storage space.

Limit/resize amount of storage provided to all members pro-bono. Perhaps standardize on a "storage tote" size, and acquire & use applicable storage racking.

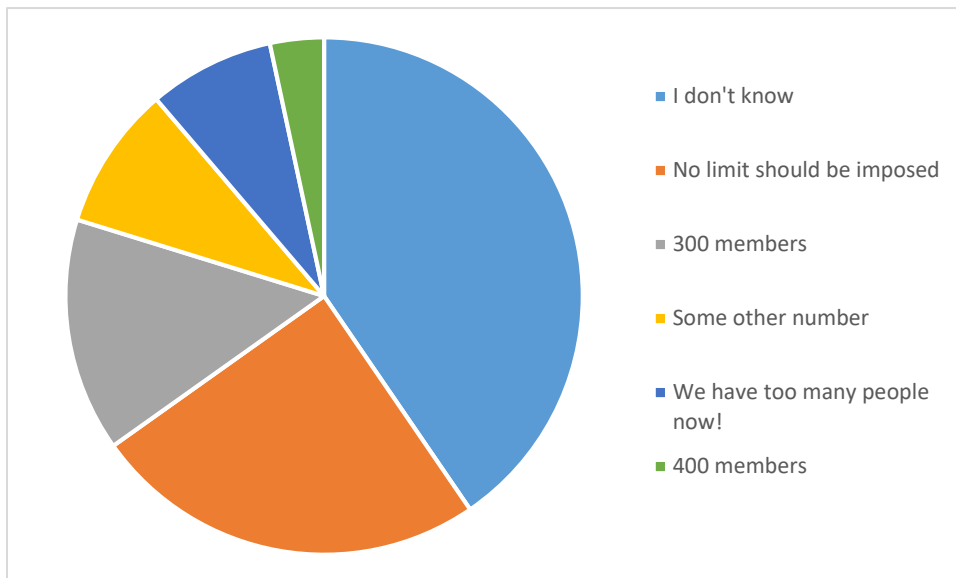
Are you interested in storage space you don't currently have, and if so, what kind?

I am not interested in any additional storage.	55
I want to rent a vault.	13
I want a shelf.	7
I want a locker.	7
I want storage space, but it's not listed here.	7
I want a full-pallet.	6
I want some sort of cart on wheels.	6
I want a half-pallet.	3
I want to rent floor space.	3



Section 4, Part 5 of the By-Laws state that Milwaukee Makerspace "...reserves the right to limit membership based on the capacity of the space." Membership in November 2016 is approximately 280. At what point should a limit be considered, if at all?

I don't know	36
No limit should be imposed	22
300 members	13
Some other number	8
We have too many people now!	7
400 members	3
Grand Total	89



Do you have any ideas for how to solve the space crunch besides what is listed above?

Incentives for private off site storage.

I think we should seriously consider "helping" interested parties in creating a secondary (not affiliated with MMS) makerspace in the Milwaukee area. By this I mean A) Find interested parties and B) Assist them with getting set up via advice and member help with whatever building they would end up with.

Build up, add a second floor.

Reduce the free storage to a locker or a half pallet. Allow new members to join only if there is storage space available.

Well, being that space is so tight I feel we should look at people renting extra space and how they utilize that space. Is it being used as a cheap storage "locker" or is the person renting or the space being used being utilized properly to turn projects over and work on items that the maker space is there for? I've seen some stuff in the same place for over a year!! Never moved. It's important for members reacting space to actively be working or using their rented space. This would be the same for any member, at any time, simply to keep the flow going and the focus on the mission and value MMS adds to the

community, city, and county. Some areas look like a hoarders paradise and I think that has sort of damaged the reputation and image a bit, especially now with all the members.

If we remove all personal storage and limit to project based storage until complete?

Is it possible to add a second floor?

Encourage sharing/subleasing of vault space - require a minimum of 2 people per vault?

We have a lot of inactive members, so I feel like a membership cap is not the best. It might be the best substitute. Or requiring that members do # of space improvement activities per year/month/quarter to maintain their membership, such that inactive members are short-lived, which is okay since they may not contribute significantly to the think tank.

As our membership increases to 200+, this becomes a bigger problem. Some members have projects/tools that can be taken home and brought back easily. Others (like myself) have roller cabs that require the max allotted space. Maybe we can do a member plan with no storage space (except for say a 24/36 hour reserved table). Also, the boat. I say he's "grandfathered in" but once he is done, we don't allow floorspace like that allowed. Any given member has max floorspace options.

I voted not to purchase the building knowing eventually the space would grow larger. Anyone should be able to join a maker space in their area. More people also means more money and more tools. revenue. I think the building should be sold again and we should move to a larger location.

Add a second floor or build a basement

Expand at the current location...up? down? A little out here and there? Create a second location just for storage, with a transportation network of bins to shuttle stuff back and forth.

These are questions about how you use the space and what you find useful about the maker space.

Pocket dimension (and wormhole for easy access)

Group membership at a close storage location.

Reduce the amount of stagnant projects that are not moving along. Some have stayed for years and some storage spots are full of junk. Move the project in and get it out ASAP

The space has become a junk heap of various collections, start limiting space to each individual. Also start jacking up the space rentals. The Makerspace should be used to make things and not for long term storage.

Convert existing pallet racking to smaller storage spaces

Various sized storage areas. If I only want to keep a toolbox there then rack space is wasted. If I want a tool cart on wheels then there's no space for that in the current system. We have to use what we need not take what we can. =)

A Rack with shelf space for projects, Regular/1 week permits apply but will keep work tables free of projects.

SECOND STORY!!

In regards to a cap of the membership, I usually don't have an issue with the space being crowded. I know for the meetings parking is a issue but limiting the membership to 300 or any other number won't help with that.

A mezzanine.

Marginally reduce size of current storage racks to increase number of storage spaces, reducing both square footage and height of each storage space.

If you are not a active member IE: use a check in system, and you haven't been involved or used the space for 6 months then you would have to give up your shelf space, you can still be a member but you don't have the privilege of shelf space

I think looking at opening a second location in the north west area of Milwaukee will help the members that live further away and attract additional members who don't want to make the trek to the space due to distance and road construction. It will also free up space in the main building. We might consider a slightly smaller location, or moving certain types of tools there so that each area has a 'specialty' area that the other space doesn't have. Say Laser Cutters in Bayview and Ceramics in the other location.. you know something to keep people interested in both locations. Some tools/equipment duplicated (cause people keep throwing table saws and sewing machines at us), but some site specific tools as well. membership in one means membership at both locations.

Please see my suggestions above. As for how many members are too many, I think the board should consider whether we want to be more analogous to an athlete's gym or a fitness center. IF we want to be a place with many casual members who occasionally drift in but mostly just want to offer their financial support to the organization, then the cap should be high or non-existent. On the other hand, if you want members to all be working members, y'all REALLY need to work on motivating engagement. After a recent diversion it took me over a month and a half to discover that. 1 it'd been that long, and 2, my dues hadn't been auto billed as I thought they were being. So far as i've been able to tell the only prompt I got was the one at the door when my key fob didn't work. If you don't want ghost members, send out a weekly invite to help a member with an existing project or something.

Converting the back hallway by the vaults may be the only answer, I am guessing this should add another 200 spaces?

I think it's important to not turn away members that have the potential to be integral to the space. Imagine if we turned away any one of the board members or people like Tom G., Just because we thought we had too many members. Maybe monitor the frequency with which members come to the space, and have a limit of active space members? Or cut the memberships of people that don't show up more than once every few months.

Keep track of member numbers and adjust for fluxuations

Not sure. I'd like to discuss at a group level and come up with a consensus. Some form of limiting membership mated to space availability with finances taken into account

Tell people to keep their shit at home and bring it in when necessary

If we don't expand to a second location, membership should have a cap placed on it. If we expand to a second location then we should allow additional members and benefit from the increased funds that comes from having more members.

Reduce membership rates slightly and charge a small amount for shelving and increase floor storage pricing accordingly.

Better organization of space, look for areas with little use, try not to be everything to everyone. More space is a great option or a second space, divide.

I like the idea of a second location

I'm voting for expanding to another building west of the current one. I'm located in west Franklin so literally any further west would be closer to me.

Economics, expansion, and equipment relocation. Members take up little space. MMS equipment and member junk does. Consider doing a usage study to determine marginally used MMS equipment. Does it make sense to dedicate workareas to equipment or crafts that are seldom and marginally used? Maybe consider having "common workspace" which includes tables and the like and racking marginally used equipment. Try putting stickers on all equipment and ask members to remove the sticker when they use equipment. How long does it take for a sticker to be removed from an item? This is an easy way to conduct an accurate usage survey that isn't driven by individual preference or profession or emotion. If local expansion (another building close by) is being considered, consider relocating things in groups apart from "core" equipment. Does a potter need a bandsaw? Does a sewer (seamstress) need a belt sander? Core shop assets (wood, metal, weld, forge, melt, etc.) need to stick together, but others (e.g., 3D printers, laser cutter, craft labs, jewelry, etc.) are not as interdependent and might be OK if they come to live in their own space.

Get rid, or minimize the number of pallet-sized storage locations. Standardize on a "storage tote" size container for all members. Two examples: <http://tinyw.in/Xk5P> & <http://tinyw.in/2EOB> .. These containers could be provided to the members by the 'space as part of their membership fee.

Partner with others shop spaces in Bayview; or limit project size, i.e. building a boat or robot arm...

Moving to a large building all together or some how expanding the current space. Would a second floor ever be an option?

Not sure

I think we need a "Space Manager" how will encourage member to use, or work with their stored stuff or move it out and free up that space. Much of the space is now used store items for poorly conceived, poorly planned, projects that sit and collect dust.

Member Feedback

Name something that Milwaukee Makerspace has done well in the past year.

Bought the building, maintained the finances.

Admitting me!

Maker Faire: Milwaukee

Made me feel welcome.

outreach through doors open and makerfaire

Maker Faire

Managed to handle the membership growth.

Makerfaire

Makers fair

Maker Faire draws an unbelievable crowd

Metal area

Volunteers taught other members things like welding, laser cutting, etc

Stayed calm, grown.

I want to say Maker Faire, but that was mostly BBCM. Getting the Tormach in was cool.

I'm really happy to see the new CNC machine, and hear about the support and training around it.

The BOD has done very well for the membership and is very accommodating to the needs of the space

Addressed the full board turnover by splitting into two elections. And participating and supporting community events.

I am seeing more classes and more learning. A good example is what Larry has done with the Tormach. "Here is what you can make, now let the space help you make something else" Type things. Project based learning scenarios.

Makerfaire

Trying to address the storage problem

MakerFaire

Been public about its support of Betty Brinn

provide a cohesive environment for collaborating on something that one may not know

Makerfaire

The maker faire, expanding areas of interest

Maker Faire

Maker Faire planning

Be open to new members

I haven't been a member long enough to answer this.

Less drama

expand its membership

Kept things running.

Growing membership

Fair

Recruitment

recruit members.

Makerfaire

Get the word out about itself and the opportunities to learn/grow which the organization provides.

Our Tuesday open meeting nights and maker fair I feel are a big selling points. Also being able to dedicate funds to sustain various areas has been a godsend.

Welding area restructuring, developing the yrade crafts area

Providing an amazing meeting place for wonderful people, ideas, and projects.

Maker Faire!

Dont know

Milwaukee Maker Faire

Makerfair, Make-a-thon

maintainining equipment uptime

Power wheels was fun

Getting people to join

taken a harder line on abandonedish projects/equipment

Space improvement day

The space has been improved to be more condusive to making.

Recent increase in classes

Maker Faire

Maker Faire

promote

Excellent board that keeps things going smoothly.

Classes

organize facilities

Admitted and qualified me on wood tools in a relative hurry, thanks to Steve P.

Grow! I barely know any of the new members.

improved Bayview

Training

Growing, controlling abandoned materials

I have only been a member for a month, I don't feel qualified to answer

The building of community is excellent and keeping costs low to members.

We have become a place that people can learn something.

Being there

community outreach and Maker faire

i love The Space, when need to get an idea into a thing I head to the Makerspace and make it. All the folks that I have met have been extremely cool.

[Name something that Milwaukee Makerspace could improve on in the future.](#)

The wood shop with completely unacceptable dust control.

Member involvement in administrative overhead, to spread out the workload.

Welcoming new members

Individual responsibility of members.

Maintaining woodshop equipment.

All area champions should be accessible through e-mail

parking

Create an Announcement Only mail list that doesn't allow comments.

Work Space, Lighting and Tables

Parking

Space and clutter to eliminate hazards

Declutter

Paid leadership positions at makerspace. Too often there is an excuse of "well we can't expect too much because they are volunteers". Not a knock on current leadership.

Community Participation.

Replacing or retiring equipment past its prime. The Kuka was dead long before we decided to jettison it.

I signed up and paid for the anodizing class but it never happened, and I never found out about it being rescheduled.

Openness to a second location

Making members that sign new member forms accountable for interventions and act as a "sponsor" for the new member.

Maintenance and care of equipment. More preventative and repair. I don't see why people can't sign in/sign out on machines. An "end of use" checkoff list to make sure people cleaned up their messes. I've spent many a "space improvement day" just cleaning the machine area after people that left chips and cutting fluids all over metal shop equipment.

Almost everything board related has slowly started to fall behind. The quality of management was much better years before, either the board members are more tired, or there is too much to do for the amount of members.

Keeping the place cleaner

A lower cost membership option for regular people than \$40/month

More space

Better Wood Shop and Reducing clutter.

Organization of layout

Education particularly study groups, making better use of CNC equipment, better workflow development

cleaning up after yourself and respecting group tools

Organizing and coaching Area Champions

better organized classes/seminars

I haven't been a member long enough to answer this.

More space for making

streamline training/approval in specialized areas.

More community building.

planning training sessions, providing contact info on machines for trainer/owner

Wearing name tags so people get to know each other

REPAIR /REPLACE THE CARPET! its ... scary. Look into upgrading the door system to prevent people from unlocking things. More cameras for safety...

More space

Actually finding ways to efficiently empower new members to utilize the tools you've said they'll get access to by joining. I signed up with two projects in hand and ready to go. That was about 6 months ago and they're barely off the ground largely because it's way too hard to line up trainings via message boards.

I would like to see a display area or showpiece area or a wall covered with photographs of projects through the years instead of we make stuff

Maybe look at insulating the door and eapl near the forge? I dont know

The woodshop needs someone to routinely replace blades and maintain equipment. It is often unusable, which is a big disappointment.

More regularly scheduled classes

New flooring in Meeting and craft area

There are a lot of "opportunities to volunteer". I love the Makers Space however when I when I joined I had no idea that I would be paying \$40 to get a second job. I am not even a board member (and most likely never will be) and most of my Tuesdays are spent doing things for the space on top of things I do for other members (and money spent). Maybe we should raise the membership fee and use that money for extra help? Also I believe board members should not have to pay fees, They do a ridiculous amount of work!

Keep it a makerspace, not a storage space

Getting members to help with space improvement

Give more money to each area

The training on the tools in the space could be more detailed and better structured for people to learn how to correctly use the equipment without breaking it a frequently.

Advertising special events

Encouraging members to clean up after themselves

high quality new tools and machines

Communicating and increasing participation

More classes

finding more space, honestly

Improve methods for qualification. I'm still waiting to be qualified on equipment I've used elsewhere before. Consider having a "equipment I've used before" sheet for screening new members.

Experienced but new members could help reduce burden on area champions via more delegation provided that they are screened adequately. They could help offer training and certification. This perhaps begs a database listing who's a qualified user vs qualified trainer.

Build a sense of community, rather than a "we're growing so fast that no one knows anyone else".

Training. I appreciate the area champions are talented and knowledgeable with limited time. Scheduling training has been a challenge. Perhaps other trusted agents could conduct training.

elimination of extra mortgage payments (\$5 per member allocation to 100%)

Increasing the space and recruiting from diverse areas.

We need to be better at getting supplies from local companies such as the plywood from the die company.

Some are butt-heads

contacting owners of red tagged property

Its not the MKE Space that has to improve, I just have to get down there and be engaged.

[What would you like to see Milwaukee Makerspace do more of in the upcoming year?](#)

What would you like to see Milwaukee Makerspace do more of in the upcoming year?

Classes

Peer groups

More community events. Make-N-Takes, Fix-It Days, parades, etc.

More classes. Specifically welding.

tutorials

social gatherings

Add additional equipment and give multi-week training classes.

Get corporate sponsors.

One day workshops & MMS interactive community stuff. Charge a fee!

?

Provide paid classes that are well structured with curriculum or project based.

Outreach, community participation. Group projects.

Community outreach

Small group classes.

Form a committee to look at expansion

Group projects.

Sign-off projects. Like what Larry is doing with the Tormach. Want to use it? Show me you can make this and understand where you will need help future endeavors.

Bigger building, more tools, and more members. We shouldn't be limiting ourselves. Especially if we want the largest makerfaire in the country.

I would like group training to make an item. For example have a class in the wood shop to make a awl

A lower cost membership option for regular people than \$40/month

Expand the metal shop; raise funds for specific machines

Classes, organizing

Throw away/recycle/sell unused equipment

another Fix-it Day

No answer

I haven't been a member long enough to answer this.

More training classes

set schedules for getting approved on equipment.

Do more for Maker Faire Milwaukee.

Community events, like the toy-making for holidays.

Keep going with classes

training

promote more community service stuff. maybe have the board appoint one or two people under the communications director to work with the community for community service type things. get the membership involved in these projects/outings. Crack down on members living their shit out and not picking it up or treating the space like their person dumping ground. I mean I come to work on my project, not clean up after other lazy-ass adults who are being self-centered toddlers.

Building user skill sets in the most efficient way possible. Workshops, classes, online videos, or a combination of them all so learning doesn't have to be so subject to the whims of individual's schedules.

I like the idea of being part of Gallery night. And also I like the idea of more social events. Some of these events could be opened to the public

Better maintain tools, particularly the woodshop, even if that means hiring a paid steward and increasing the blade budget.

Classes

Special interest groups that meet at the space.

Replace unserviceable tooling

More social events like game night

Lease or buy equipment

They could do more as a local sponsor of Maker Farie.

Continue organization of space

add quality tools

Just general caring and maintaining the space. And classes by area champions.

More classes

expand

Improve equipment access.

Group projects / Funded get-togethers

acquire more modern tools for the wood shop

More group projects and additional space.

I would like to see the space have higher quality professional level tools.

Unsure

unknown

Do a better job of collecting dust in the wood shop.

[What would you like to see Milwaukee Makerspace do less of in the next year?](#)

space and member projects on expired permits

Worry.

bo opinion, newer member

Quit bitching and moaning

Hoard craft stuff that's not being used. maybe some of these things could be used for community

?

Meetings. Make them biweekly.

Bicker. We're doing pretty well though.

Scramble for storage space.

People bickering on the mailing list.

I'm pretty happy with everything

Long meetings.

More skillshare. Being a member I've had pants hemmed up at \$5 a pop. Way cheaper than a tailor shop, I've had simple things done for a couple bucks in the donaton jar. Lots of skills that can be taped into for donations, pay, or training below pro cost.

less removal of tools for junk. There is too much junk and crap in the building.

No answer

A lower cost membership option for regular people than \$40/month

Nothing comes to mind

BS emails

No answer

I haven't been a member long enough to answer this.

nothing

Make new rules.

nothing

not sure. need to think on this. the board does a great job. the members need to leave less mess and less piles of their things around and then leave the space. we are a community, not your personal home. pick up after yourself you squirrel-hoarders.

Force champions to repeat themselves to individuals or small groups of new members every few weeks in order to train folks up.

This is difficult to say at this time, since new things are being tried all the time and a pattern has not been established of what is effective versus ineffective

Makerfair

Buy unserviceable tools

Not sure

Use less electricity on the lighting. Install the new timed light switch system and the LED bulbs. Saves MMS money for more interesting uses.

No answer

Bicker

nothing really, off the top of my head, great group to be a part of.

Decentralize information. It seems like there is no one place to start in order to get a complete understanding of all of the issues at hand. This is sort of an IT thing.

Grow! 300 is plenty.

Nothing, everything is great!

Less makerfair involvement, it takes the focus away from working on the space.

Unsure

unknown

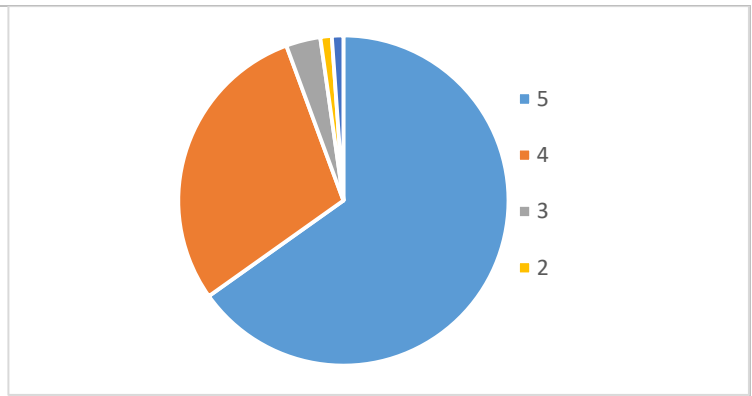
We live in a world of "more" so there must be more.

Community

How safe do you feel when you are at Milwaukee Makerspace?

5 = very safe, 1 = not safe at all

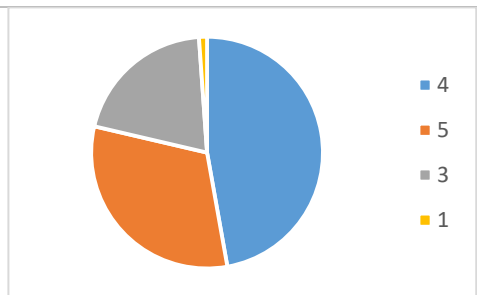
5	58
4	26
3	3
2	1
1	1
Grand Total	89



How much do you feel you can trust other Milwaukee Makerspace members?

5 = a whole lot, 1 = not at all

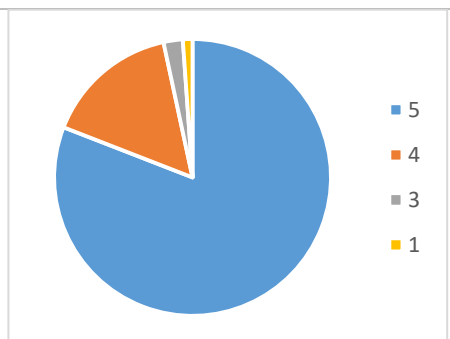
4	42
5	28
3	18
1	1
Grand Total	89



How likely are you to recommend Milwaukee Makerspace to others?

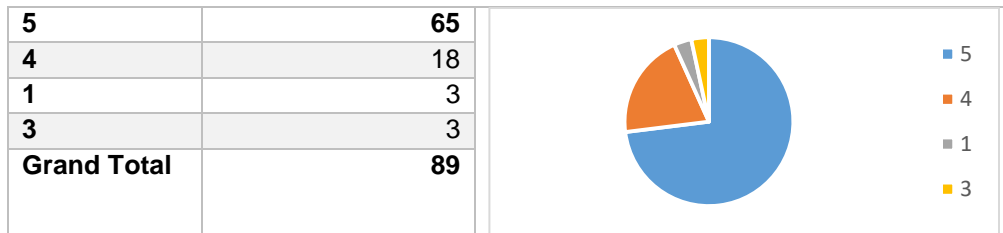
5 = very likely, 1 = not likely at all

5	72
4	14
3	2
1	1
Grand Total	89



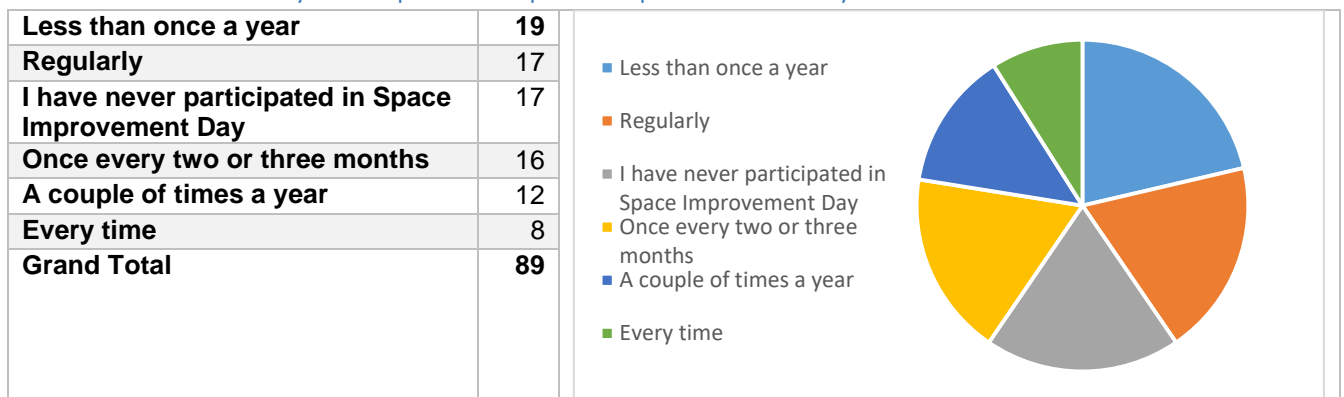
Are you satisfied with the COSTS associated with membership?

5 = very satisfied, 1 = not satisfied



Volunteerism

About how often do you help out at Space Improvement Day?



What would make you want to help at space improvement day?

More notice.

Clear directions on how to help, readymade list of tasks

On "job" training

I do it because it's the right thing to do, but the food is a nice incentive to push myself harder.

Improving my availability. (Not makers pace problem)

whatever needs doing

being a good maker

Having a personal gain or interest in a project.

Clean before cleaning

I'm a newer member so I'll help in the future!!

If my work schedule allowed me the time to participate

Not have to clean the bathroom. Pay someone to do it.

It's purely my schedule.

Different day/time of the week.

I don't know this would work for me, but I'd be happy if part of my membership dues subsidized the membership of those that do participate. Maybe they get \$10 off a months dues when they participate.

I already want too but Sundays are family dinner at the in-laws.

Dont make unnecessary changes for the sake of changes.

I enjoy it already.

A random gift to one person that helps at space improvement day. Maybe we could get business to donate an item to be given away

Have it during the regular meeting times

Allow members to suggest and then put to vote potential layout alterations of the various spaces
not Sundays, weekends are precious to me.

I run my own business and most times am otherwise engaged during those days.

I help maintain the space in the areas I use when I am at the space, so to the end of space improvement day itself, I do not know, but I pride myself on leaving areas cleaner than I found them.

Weekends are busy for me

No answer

I haven't had the time to use the MMS yet, I'm confident that when I have time to use it, then I'll also have time for SID.

Different food

Being in the country

If I had off of work on Sundays I would be there.

knowledge of specific things that need to be done, rather than generic cleanup day. more flexible with times...perhaps an ongoing space improvement to-do list that can be accessed anytime, by anyone.

My schedule getting free up.

I just joined recently so I plan to contribute during my membership.

different day :-)

Its good as is

1. We need to promote it more as a community effort to keep the space up and a chance to get together afterwards, and less of a 'we need to clean the space. ho-hum'

I should say that I've done space improvement work, just not on that specific day. I think there's some conflict in messaging between the folks who want MMS to be a club and those who want it to be a toolshop. Both are valid but when you're a new member you're assumptions are rarely challenged in this regard, so the takers just take and the givers get fed up because they feel like they're being ignored when (perhaps) the takers just need to be invited to participate more directly.

Sundays are a problem for me

Family problems frequently prevent attendance

Good food

Food.

Free food is always good.

Do to work constraints I can't always be at Space improvement day! However I spend approximately 3 times as much money on the Space each month as I pay for a membership. Also quite often I spend 3-4 hours on Tuesday helping the space. I sometimes feel pressured to attend Space Improvement Days while other members never do anything other than pay dues.

Storage space allotment

having day off at work

Time in my schedule.

More organization Todo list for each area

Having more personal time

I rarely have time to visit MMS as is and prefer to clean whenever I am able to be there

unsure very pressed for time just joined

I just care for the space.

Have it on a Saturday. I can't make Sundays most of the time.

Honestly? being closer.

Organizing.

I generally view SID as a "let's get together and clean up messes". I don't make messes at the 'space, so why should I clean up after others? I have no problem giving time to the 'space for space-related projects

donating a bac vac instead of watching members sweep by hand:)

A little bit better organized. In the 2 Space improvement days I have attended, I was unsure what to do. I wandered around asking who needed help.

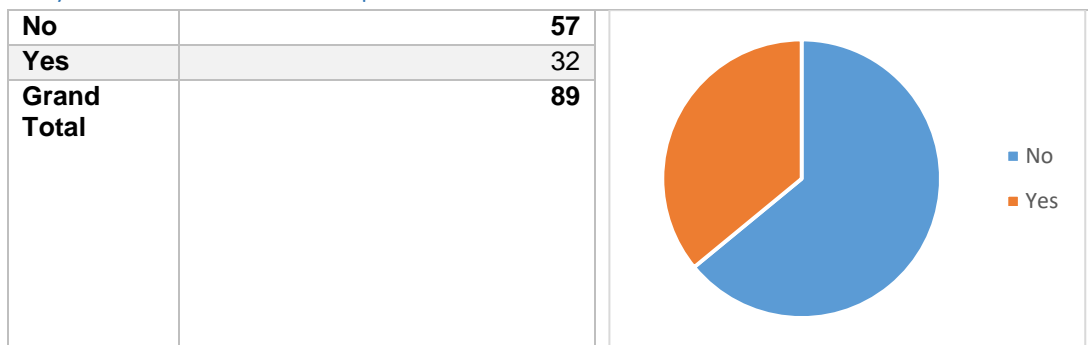
a day other than sunday, I work most sundays

Nothing more currently. I try to be at everyone that I can but due to work it is difficult. If people are looking for incentives, recognition of "Who attend" or some similar might be a good low cost option.

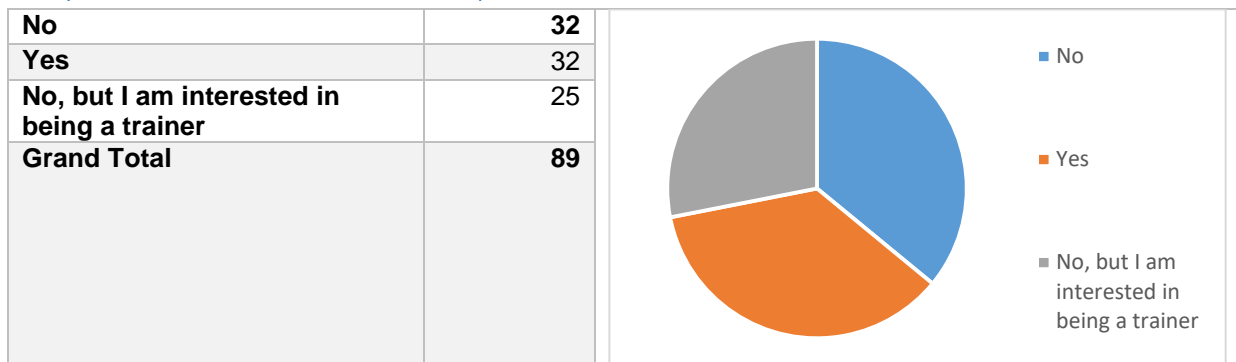
nothing

?

Do you own tools at the space that others use?

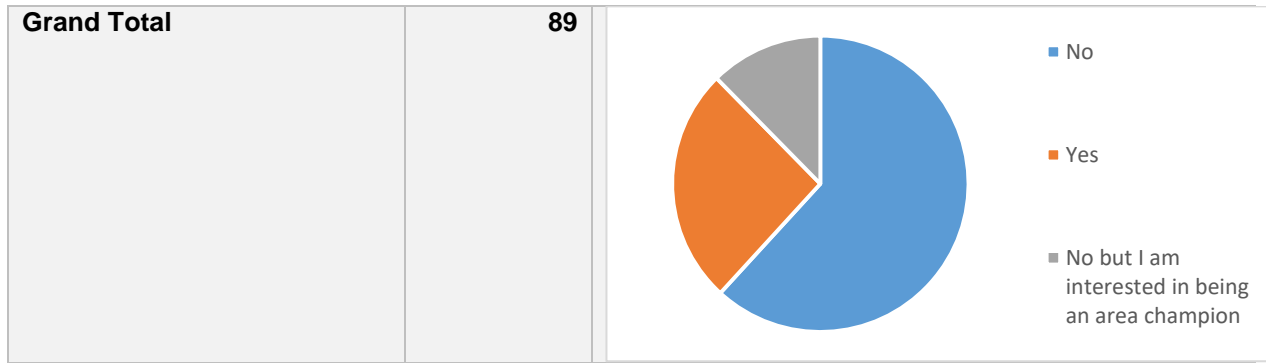


Are you a trainer for tools at the space?



Are you an area champion?

No	55
Yes	23
No but I am interested in being an area champion	11



How would you suggest we motivate members to help with upkeep of the space?

How would you suggest we motivate members to help with upkeep of the space?

gamify the system, some sort of "gold stars" - recognition for helping.

Work earns storage

Maybe break up Space Improvement Day into an "every Sunday" sort of thing, with larger projects taking place on the last Sunday of the month.

continue doing tutorials on that day

require it

Short of paying people or awarding door prizes, I can't think of any.

If a member shows up to space improvement day more than 8 times a year the next year your first month is free membership. Or have raffle with gift cards to craft and hardware stores each month.

Have rules: if you want to work on your shit here then you need to participate in keeping it clean. Period. @winnie will be happy to deliver this in British!!

?

Increase membership fees and allow them to be reduced by helping out at the space.

Have it once a month on a weeknight as well.

Membership discounts? "If you've participated in 2 space improvement days over the last three months, you get a \$5 discount on your membership".

Require it. Reinforce that this is a community, the "knowledge over tools" summary of benefits of membership.

The mailing list is a fantastic tool, but there is a lot of noise on there so I often miss a lot. I'd suggest that the board and area champions put out a periodic (monthly or weekly) newsletter with any goals they have for each space.

Let it be more grassroots and less top down.

"Sign in/sign out on machines/equipment. Was the machine clean and ready for use? Any maintenance issues that need to be addressed by area champion or the board? Was there anything I'd like (more) training on?"

Things like that would yield more ownership and give insight on needed training and utilization."

I'm not sure.

Random drawing for a gift of some sort

Financial incentive

Monetarily fine/publically shame people who don't clean up after themselves; use the FOBs for entering the building as lockout tags for certain machines so there is a log of who used what machine and when.

Require a minimum amount of time required to maintain membership. It is a daunting task to keep track of but might be required. Some people fill the garbage's but have never taken them out. I routinely have to show people where the dumpster is.

Pay a fee for leaving area uncleaned

Perhaps having more than one day. The weekends can be difficult to do things.

Require a certain number of hours a month "public service" to the space as part of your membership. Can be anything from Space improvement Day to sweep a floor, clean a bathroom, scrub a sink, or repair something.

No answer

Public shaming

Increase membership cost by \$10 / mo. If members volunteer @ 1 event / month (MakerFaire, Space Improvement, Class Instruction, random project) they get their \$10 back. Or make storage space only available for free to members that help. Non-helping members pay \$10 / month.

Drawing for prizes

Training sessions worked well, Add a demo time/exhibit of cool projects (a more in depth version of the Tuesdays "anything cool you made") make it THE social event of the month.

Space improvement day helpers have the smaller storage fees waved for the month.

bonus program for cleaning...perhaps a free month of storage or membership for the most frequent/efficient cleaners.

Celebrate people by name, not just at meetings, but online, on the blog, in email, etc...

not sure

People seem to think they own the space as individuals and less of it as a community. Worse when you go and talk to them, they seem to think that they are special and should be treated differently. its a real

turn-off when you have to tell someone "Look, as a champion, I've had complaints because your stuff is everywhere and you don't clean up when you leave." and you get the response of "well, I have a lot of stuff," or "I work a lot on my projects here and no one else seems to." WHY DO YOU THINK NO ONE WORKS HERE! I've had at least 2 people confide in me they DON'T work here because of certain members taking over areas as their personal work areas and leaving the place a mess or leaving their project bits everywhere. Worse when you ticket these mess-makers or try to talk to them reasonable - it blows up in your face, they complain to everyone, and you get treated like crap from the rest of the membership because you had to be the bad guy for the rest of the space by asking someone to pick up things. Its a burnout.

Require an hour or two a month cleaning/improving the space to have a vault/extra floor space.

Big WWII-style murals/posters on the wall exhorting all to chip in a-la "loose lips sink ships" & "We can do it!"

I like the idea of adding social/fun things to a work meeting.

Dedicate time for food? So 1-4 for clean up and 4-6 for food

Pay or hire stewards or champions an hourly wage to upkeep equipment if needed.

Don't know

If you don't attend 6 Space Improvement Days per year pay another \$10 per month. Or get \$10 off when you show up?

Storage space allotment

Charge those that don't help at least four times a year a small fee.

tie equipment check-off with cleaning/participation in space improvement in some way

Change more membership fees

Offer 2 or 3 "tokens" that members can use in exchange for a soda any day.

Call their mothers

Offering training on SID I think is a big help in drawing in members.

Offer discounts associated with time spent cleaning the space.

might be time for paid professional maintenance

Classes. And building a sense of community with the members.

Membership discount

unsure

Open listing and prioritization of projects. Without "buy in" from team members, they are less likely to help. Giving them a true sense of ownership is essential to completing any project, especially volunteer ones. Free food is nice, but to just show up and help at random is optimistic and more altruistic than

most will agree to. That which is "housekeeping" (e.g., clean up) should be separated from that which is true "improvement" which might entail "conversion" or "change" or "transformation" or "upgrade". Housekeeping expectations / activities / schedules should be posted publicly so that it does not detract from "improvement day".

Training: show the expectations for utilizing tools. Warnings: issue warnings to members that mistreat tools. Cameras on major tools or in "problem areas". Warnings go to members that don't clean up after themselves. Tool usage check-lists and/or logs. Make entering a log entry part of utilizing a tool.

Recognition is huge but might now work completely. I feel that any effort to motivate should be a positive reinforcement instead of a negative consequence.

Help members see what spaces could be, see how they could be clean and useable .

Make them clean up

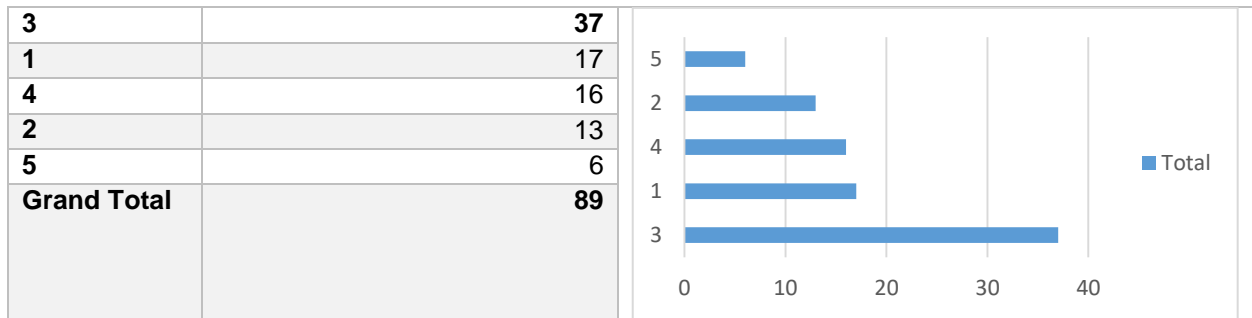
tempt them with small shiny objects

This is a tough problem, I don't have an answer.

Priorities

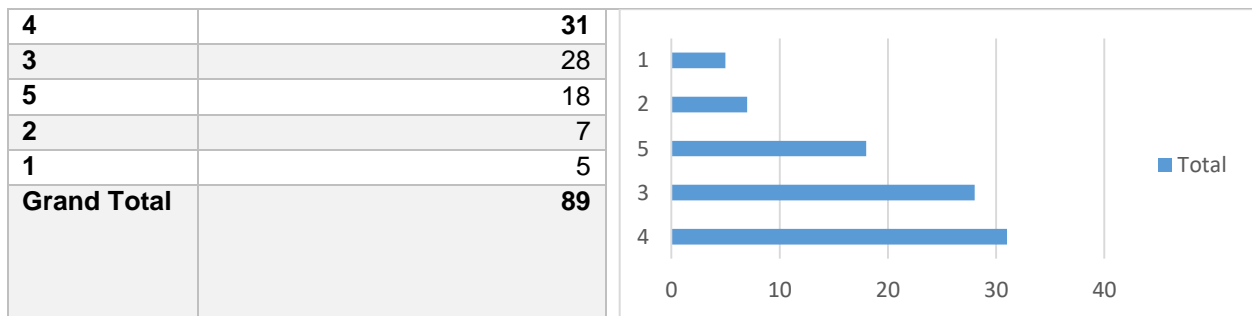
Attracting New Members

5 = very important, 1 = not important



Retaining Current Members

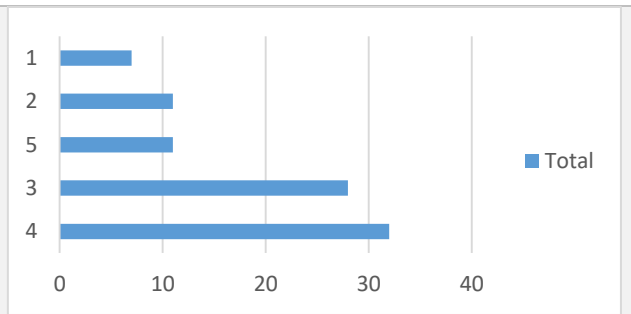
5 = very important, 1 = not important



Group Projects

5 = very important, 1 = not important

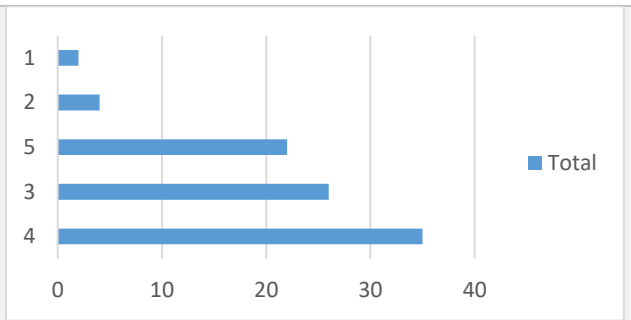
4	32
3	28
5	11
2	11
1	7
Grand Total	89



Makerspace Events and Meetings

5 = very important, 1 = not important

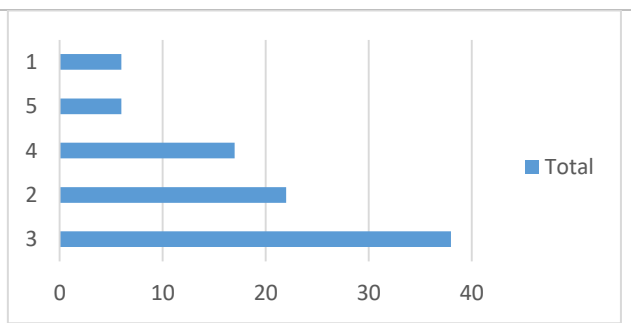
4	35
3	26
5	22
2	4
1	2
Grand Total	89



Hosting Events By Other Groups

5 = very important, 1 = not important

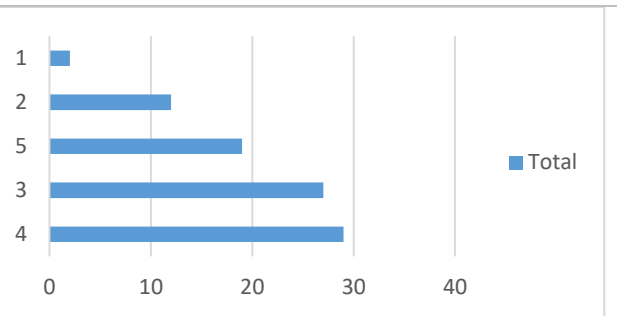
3	38
2	22
4	17
5	6
1	6
Grand Total	89



Community/Neighborhood Involvement

5 = very important, 1 = not important

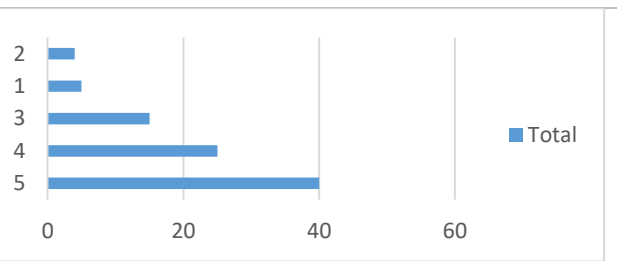
4	29
3	27
5	19
2	12
1	2
Grand Total	89



Participating in Maker Faire Events

5 = very important, 1 = not important

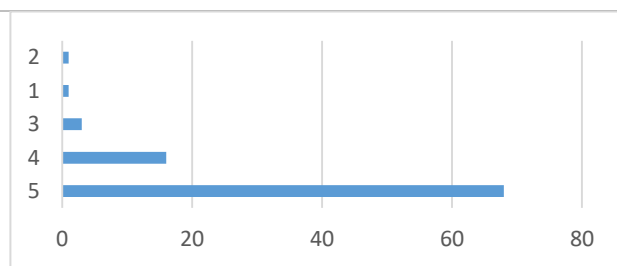
5	40
4	25
3	15
1	5
2	4
Grand Total	89



Training on Tools and Equipment

5 = very important, 1 = not important

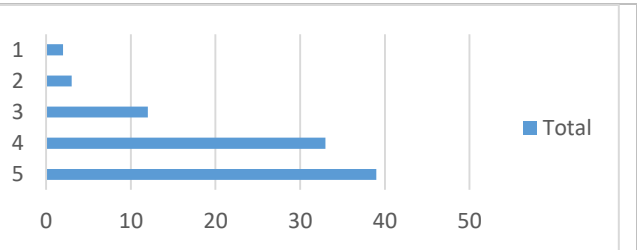
5	68
4	16
3	3
1	1
2	1
Grand Total	89



Acquiring New Tools and Equipment

5 = very important, 1 = not important

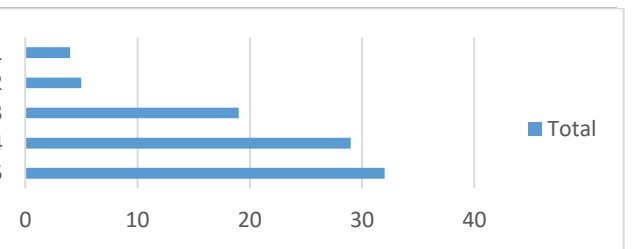
5	39
4	33
3	12
2	3
1	2
Grand Total	89



Orientation Classes/Videos

5 = very important, 1 = not important

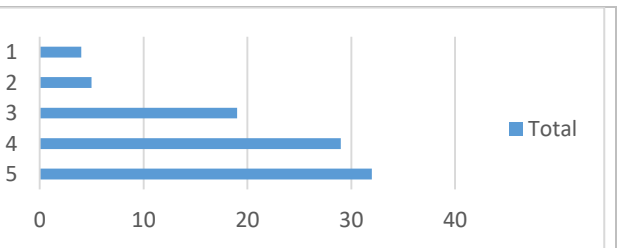
5	32
4	29
3	19
2	5
1	4
Grand Total	89



Available Workspace

5 = very important, 1 = not important

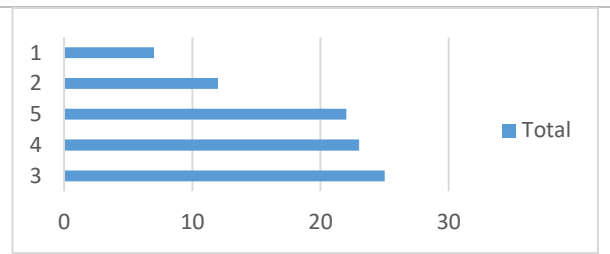
5	52
4	24
3	10
1	2
2	1
Grand Total	89



Available Storage Space

5 = very important, 1 = not important

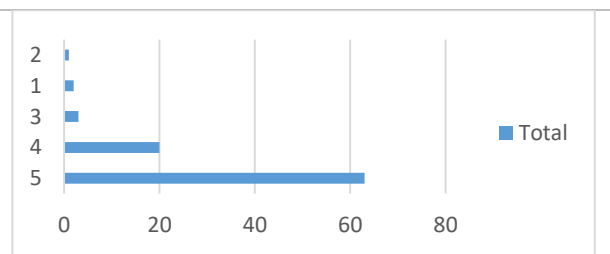
3	25
4	23
5	22
2	12
1	7
Grand Total	89



Safety

5 = very important, 1 = not important

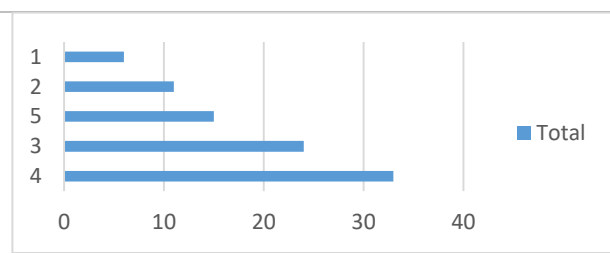
5	63
4	20
3	3
1	2
2	1
Grand Total	89



Updating the Wiki

5 = very important, 1 = not important

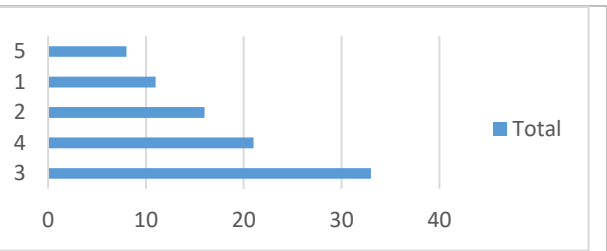
4	33
3	24
5	15
2	11
1	6
Grand Total	89



Making blog posts

5 = very important, 1 = not important

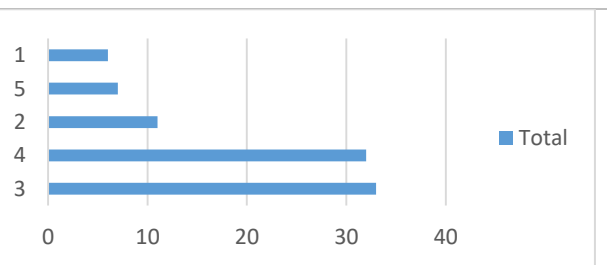
3	33
4	21
2	16
1	11
5	8
Grand Total	89



Participating on the Mailing List(s)

5 = very important, 1 = not important

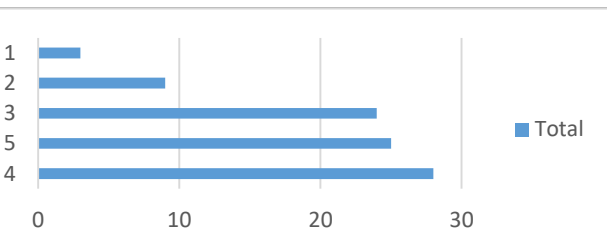
3	33
4	32
2	11
5	7
1	6
Grand Total	89



Group Finances, Budgets and Planning

5 = very important, 1 = not important

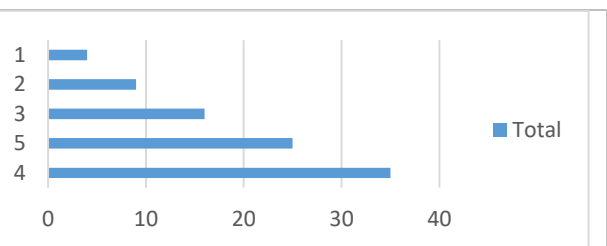
4	28
5	25
3	24
2	9
1	3
Grand Total	89



Group Discounts on Tools/Materials, Bulk Orders

5 = very important, 1 = not important

4	35
5	25
3	16
2	9
1	4
Grand Total	89



Any priorities you would like to elaborate on?

Making it easier to get training

I like how specific the survey is. Maybe next time have a button that says I'm a new member but this is what I would like her something that gives you the option to know it's a new member but they also have ideas and input that they feel are valuable.

Start seriously planning for expansion and attracting new members. Don't think about limiting and closing off. If dues must rise, so be it.

I believe high use tools like laser cutters should be prioritized for replacement. Our area champions have to work on them a lot plus several other members have to too.

Training required to use equipment safely. We can be a bit casual about that.

High priority on more people, more tools, and More space. The space is for opportunity and making. not storing pack rats stuff.

Step by step instructions are very, very important.

New, updated equipment is safer and more user-friendly (generally)

The tormach was great to see with the group buy, but if there is a surplus money coming in each month, why cant the organization buy some better tools? The wood shop is lacking and the hand tools outside of the wood shop are poor. if there is \$5000 surplus each month, put it into new/ used tools that are not always breaking.

I feel that community involvement is good for the space, but many introverted members may feel threatened by large influxes of nonmembers; I feel at times available workspace is encroached upon by having too much equipment in an area at a time.

TEACHING members HOW to clean a bathroom, wash your own dishes, empty a vacume PROPERLY and CLEAN THE FILTERS, etc.

I'd love to see MMS be more involved with Maker Faire Milwaukee.

more space to work on projects

A lot of these depend on what the details are.... For example. Recruiting and keeping members... it depends on who they are and if they are good members of piles of bird-poo. Group projects are important, but it depends on what it is and who is responsible for it. We've tried group projects and people seemed lack-luster on many of them. Maybe it was the way it was promoted. I feel like at times we brow-beat people with how we ask people to participate in these things. They are allocated space, but then quickly people lose interest. For me, I would participate but the distance to get to the space (and now the construction) makes getting to the space a pain. There are a lot of great things, but it can be painful. Also this year I never participated in MakerFair because the meetings were held at the space on a day that was not the Public Meeting... it meant trying to get here, in addition to have to break long standing Wednesday activities that I am involved in. I had to choose - and that kind of thing can hamper activities as well... the timing of what is being done.

I'd be really interested to see pseudo-sponsorship by local materials & tool suppliers. Not so much giving product away but coming to rep their wares either in person or online, and providing bulk buy pricing which we could collectively leverage for our upcoming projects (e.g. if someone needs steel and I need brass, we could go in on a monthly SpeedyMetals order or something). I dunno, maybe even take the discount in free material for the space instead of a reduction in price, or "round up to donate to the space"?

I feel many things get buried on the wiki. It is out of sight is out of mind. A once a month one-page newsletter with up coming events/classes with times and dates I would think would be most useful

More direct communications, rather than expecting members to keep up with the forums.

I am new but my observation is more in depth training is needed. I have been involved with training professionally and it is lacking.

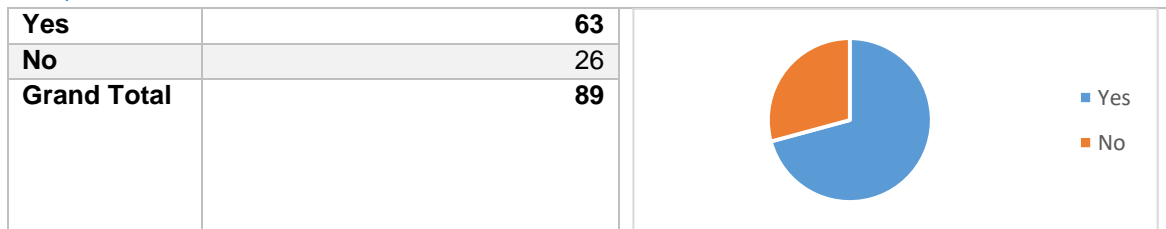
possible expansion and all the planning involved.

You might consider limiting the availability of storage lockers (or changing the price of lockers) in accordance with those who attend and participate in space improvement day.

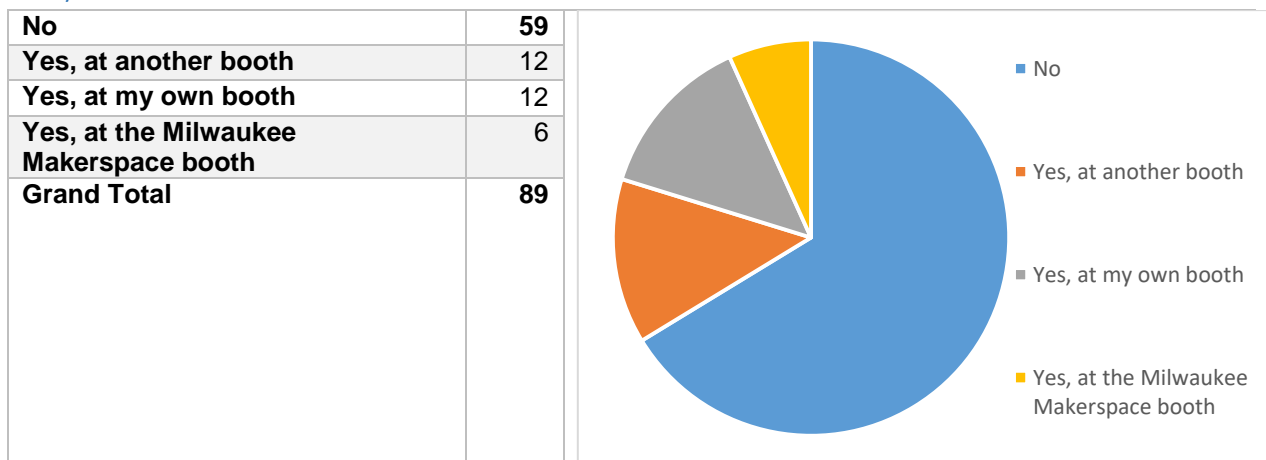
Perhaps a group project as a community service would provide a chance to conduct training, permit areas to work together and increase visibility in the community.

Milwaukee MakerFaire Participation

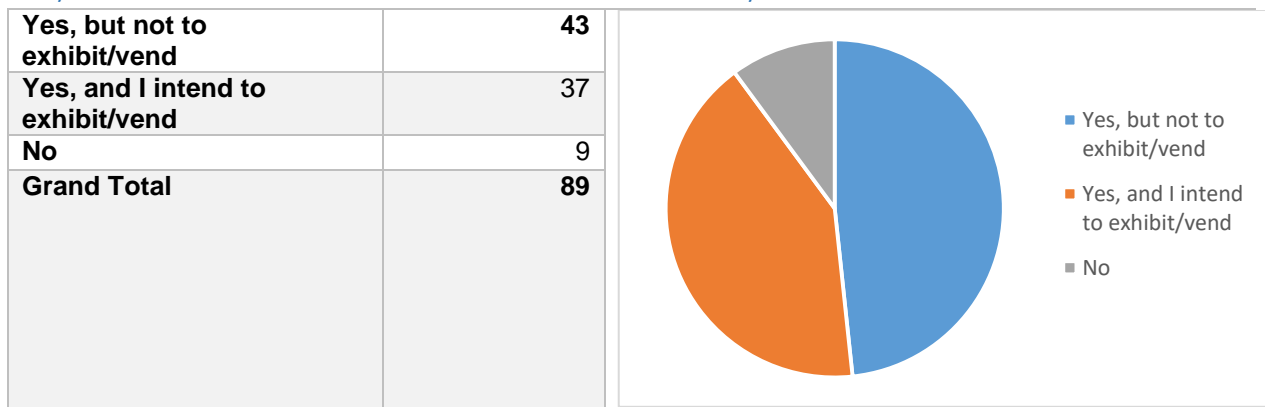
Did you attend Milwaukee MakerFaire in 2016?



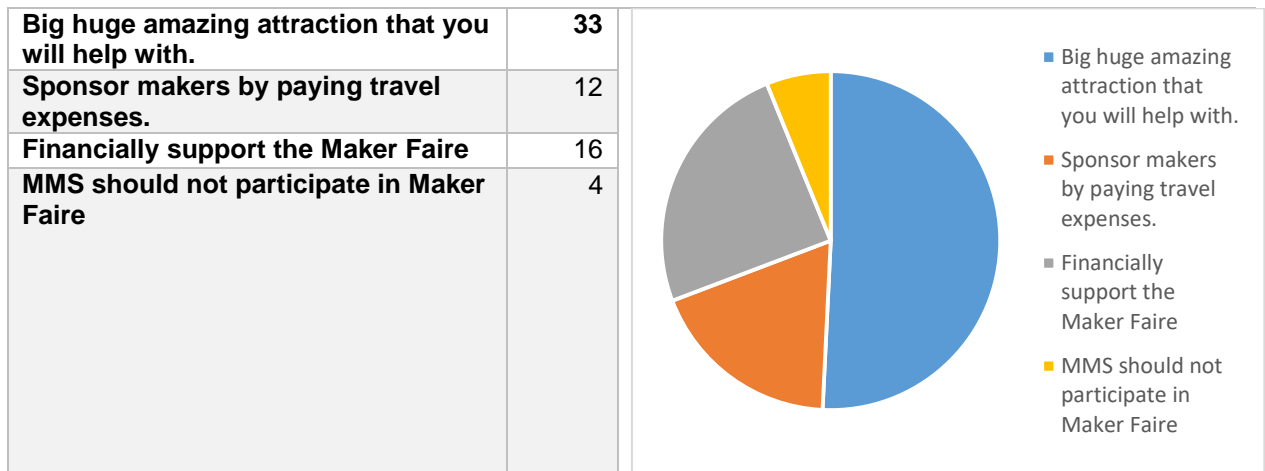
Did you exhibit or vend at Milwaukee MakerFaire in 2016?



Do you intend to attend Milwaukee MakerFaire next year?



What is the best way for the Makerspace to participate in Milwaukee MakerFaire?



Other responses

I think by encouraging members to get involved either by volunteering their time or by having both (both commercial and non)

Focus on providing volunteers.

Supply volunteers

Recruit exhibitors and volunteers.

providing volunteer support

I'd like to see a "beginner's booth" type thing. Most booths seem to be geared toward folks with a lot of accrued skills to show off. What could speak volumes for the maker mentality is what people made with limited skills and means.

Everything except for not participating

a large booth that Spavce members can exhibit at that tells everyone else what we are.

I've never been to on, so I have no idea!

Answers 1 and 2. (Maybe 3, but not necessary.)

We need to do 1 and 3, but we also need to get volunteers... but we need volunteers... not Volun-tolds. We cannot brow-beat people into joining, we need to show them why it's great. I saw some things to try and get people to do it, but most of it was verbal and occasionally posters. Worse the meeting was the day after the public Meeting. Coming to the space 2 to 3 times in a row everyweek is fine for some that live near by, but not fun for those of us who live further away.

I don't have any good answers to offer.

I dunno

Just by being there

I'd like to encourage member-defined involvement, while discouraging expenditure of time and money on solely event dedicated projects

Volunteer, booths, demos

I think it should be on a year but great basis what we can do vs what bbcn needs.

continue as normal

Don't know, never been there.

Current involvement is fine

don't know enough about it

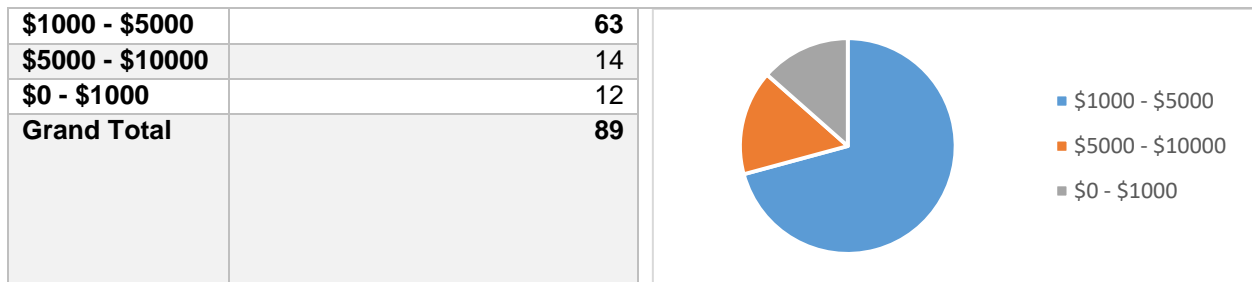
I think some large attractions are nice but having a good representation of the space and sharing our knowledge/projects to inspire others is better. Also volunteering to run the Faire is important as it gets the face (the members) of the space out in the community.

Unsure

I have no interest in the Faire.

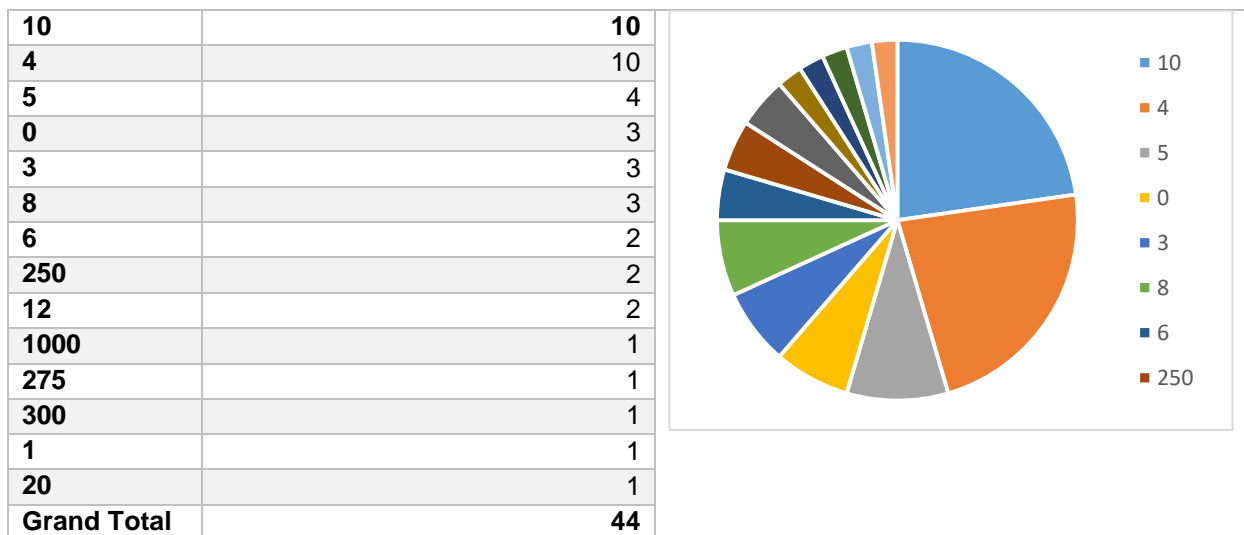
MakerFaire Budget

How much money should the space commit to funding Makerfaire Milwaukee over the course of the year? This includes funding for group projects, hosting events/parties, transportation, and contributing to fair expenses. For context: In 2016 we spent approx \$600 on a truck rental and party. In 2015 we spent approx \$3500 on truck, party, and the giant clock exhibit.



MakerFaire Stipends

This year the board funded four travel stipends for makers from other spaces, reimbursing up to \$250 per person for actual expenses to come to MakerFaire. How many stipends should MMS provide for makers coming from outside the area in 2017?



Other responses

Unknown

I really can't answer this.

\$250

no qualified opinion

A large donation for a major item

No more than \$100 per stipend.

Same

Zero. Why don't we build a really nice area to exhibit all the different projects and things that people can make. One option would be to have some sort of pulled structure or booth structure that maybe state fair could rent to us or just let us use for free and set it up with like a white drop cloth in an area that people can see hey these are the items that were made at maker space. I feel like maker fair allows the attendees to lose sight of what maker space is actually about and what can really be done there. Instead of it being kind of messy let's make it kind of classy. Let's project the image that we want to project with allowing people the ability to expand their horizons, meet new people, learn new skills, make cool shit, and so forth.

at least four

?

4-5 sounds about right

8-10 up to \$2500

I think it needs to be on a budgetary basis. Based on the treasurer's reports, what can the space budget for this?

As many as possible. it should be voted on when the time comes.

\$0 (sorry... I'm probably lame...)

These are questions about how you use the space and what you find useful about the maker space.

Less than 50

none, everyone else has to pay their own way, I would require an application and project of sorts to be awarded a scholarship.

Is it possible to get someone like Adam Savage or other national talent to help draw more general public?

No less than 4

Depends on how far they are coming (priority on those we have not met yet who would not otherwise be able to attend) and what they are contributing (is it something really interesting or unique that would be a good contribution to the Faire?)

\$250 is fine

No Opinion

4 - but wasn't it "per group" not "per person"?

as many as the board can afford

same

1. We can cut back on travel expense needs by having a 'Host a Maker' program. I didn't see too much of this outside of the Maker Faire people... we ended up hosting on accident at the last minute. That said. I think we would do it again. that can help people form connections with other spaces. Otherwise I would say treat it like a scholarship and have a larger fund... say part of the 5 to 10 K budget is towards the travel. Maybe \$1000 to \$2000 of the budget. but people have to apply and this way those who are further with cooler things can get a bit more to get here, while others that are closer don't get as much. Also having a travel coordinator to try and arrange better transportation for groups (individuals, known or unknown) can be arranged to help cut down on cost.

I would like to see 10, and the party at the space to be improved upon. I'm not sure how this point?

I dont know?

As much as you deem necessary or prudent. I trust you.

N/A

I pay for enough things for other people. They can pay their own way.

Not sure

No more than five.

not familiar with how stipends were expected to enhance event/community, or how it worked out in hindsight

Space should not be paying stipends but should be encouraging Make Mag or other sponsors to do so

Same

unsure need more detail

same

I don't know. I do not personally participate but think that it's great to see people of different skill sets coming together to do group projects. I advocate but probably won't participate. It's especially important if MMS wants to progress socially as a club.

I don't have a strong enough understanding of MMS finances to provide a number.

6-8

don't know enough about it

As many as possible within the limitations of the budget. Getting diversity of ideas at MakerFaire is critical to the mission of the event.

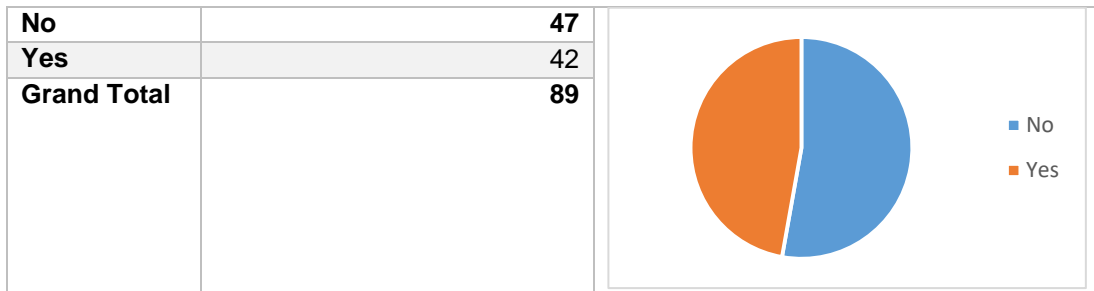
10

Unlimited for worthy projects

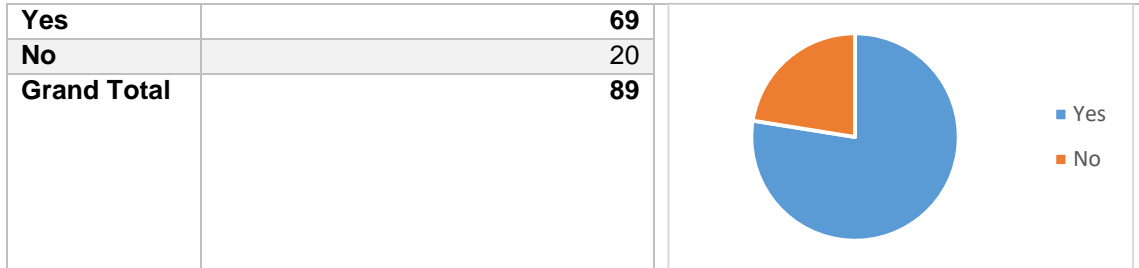
I have no interest in the Faire.

Specific Spending Initiatives

Repaving the parking lot



Awnings over entrances

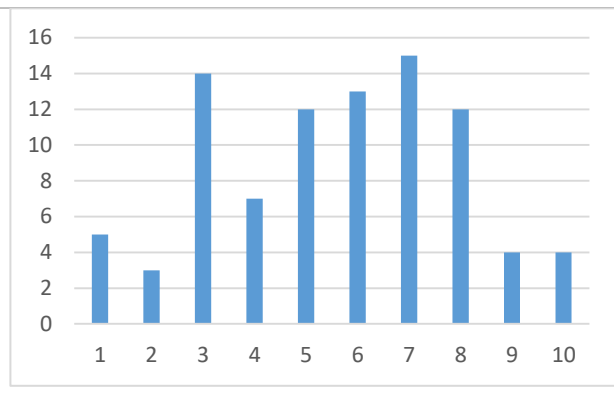


Funding Priorities

Improve common spaces

10 = Highest priority, 1 = lowest priority

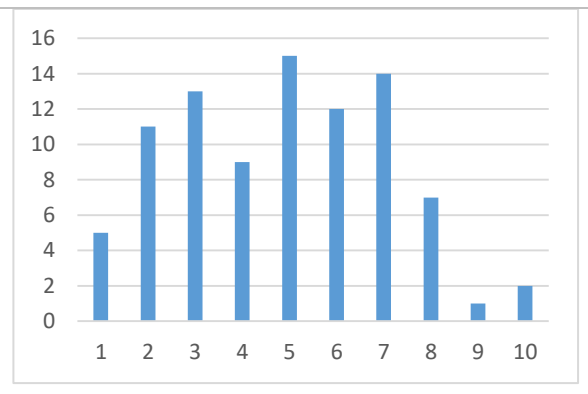
7	15
3	14
6	13
8	12
5	12
4	7
1	5
10	4
9	4
2	3
Grand Total	89



Improve exterior

10 = Highest priority, 1 = lowest priority

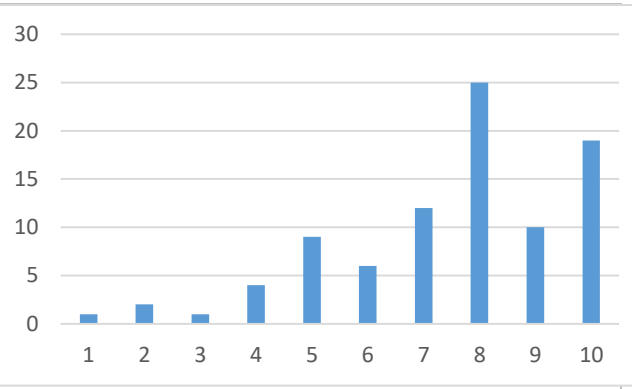
5	15
7	14
3	13
6	12
2	11
4	9
8	7
1	5
10	2
9	1
Grand Total	89



Supplies for various areas

10 = Highest priority, 1 = lowest priority

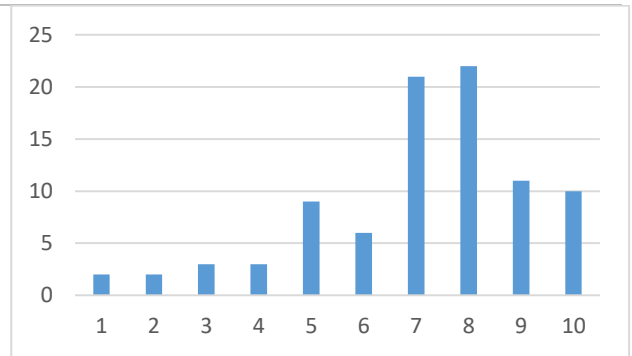
8	25
10	19
7	12
9	10
5	9
6	6
4	4
2	2
1	1
3	1
Grand Total	89



Small tool purchases

10 = Highest priority, 1 = lowest priority

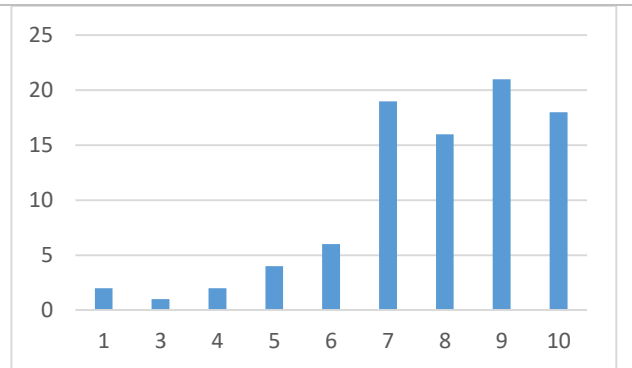
8	22
7	21
9	11
10	10
5	9
6	6
4	3
3	3
1	2
2	2



Large tool purchases

10 = Highest priority, 1 = lowest priority

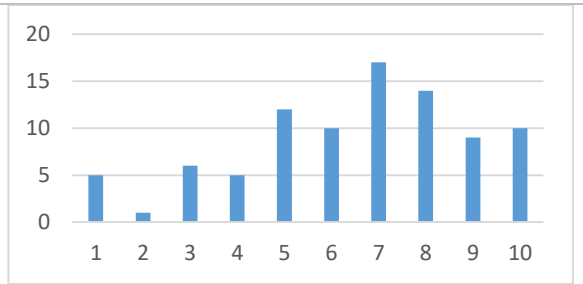
9	21
7	19
10	18
8	16
6	6
5	4
1	2
4	2
3	1
Grand Total	89



Building maintenance

10 = Highest priority, 1 = lowest priority

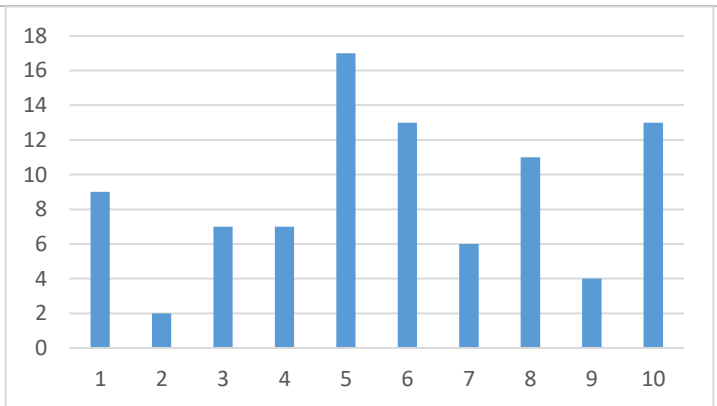
7	17
8	14
5	12
10	10
6	10
9	9
3	6
1	5
4	5
2	1
Grand Total	89



Purchase the building

10 = Highest priority, 1 = lowest priority

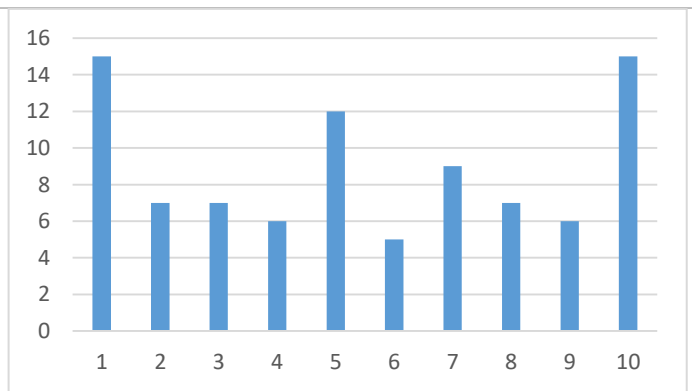
5	17
10	13
6	13
8	11
1	9
3	7
4	7
7	6
9	4
2	2
Grand Total	89



Space expansion to a second location

10 = Highest priority, 1 = lowest priority

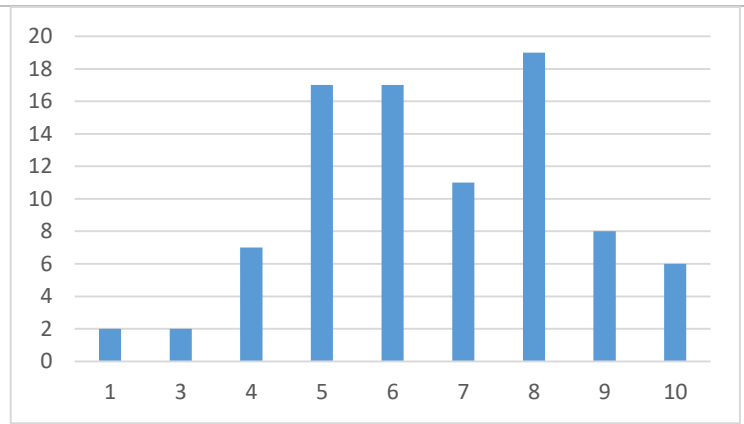
1	15
10	15
5	12
7	9
3	7
8	7
2	7
9	6
4	6
6	5
Grand Total	89



Infrastructure improvements

10 = Highest priority, 1 = lowest priority

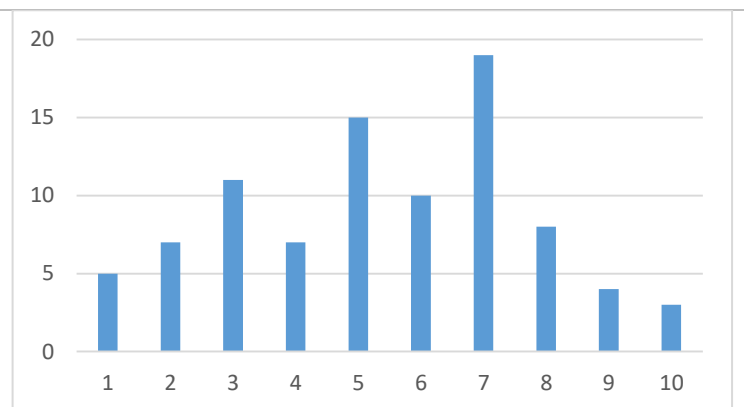
8	19
5	17
6	17
7	11
9	8
4	7
10	6
1	2
3	2
Grand Total	89



Cater public events

10 = Highest priority, 1 = lowest priority

7	19
5	15
3	11
6	10
8	8
4	7
2	7
1	5
9	4
10	3
Grand Total	89



Other (specify)

The quality of small tools on the rack is very poor. A standing budget to buy better tools would be nice.

No answer

Expand at current location...up? down? A little out here and there?

1. PAY OFF THE MORTGAGE!!! 2. Build up a GENEROUS emergency fund. 3. Look at building improvements like lighting over the center alley door and the street door, vinyl instead of carpeting in the craft lab and the snack area, and some sort of "storm windows" enclosing the porch on the street door to create a vestibule in the winter to block so much cold air from entering.

Remove parking area and perhaps a loading / unloading zone addition. Trying to bring materials in for projects is the most annoying part for me. Also maybe add large carts like home depot (et al) for carting in large materials.

Rip out the old carpet and replace it with something. I think dirt floors are cleaner than what we have sometimes. As for the big and small tools. I think it depends on what the tool is, what kind of use it will see, do we have something like it already - and what condition is the current one in (e.g. misused, or heavily used and falling apart), or we have 4 of them and we don't need more.

Pay stewards to maintain equipment, particularly woodshop, and ensure blades are sharp and purchased when stock gets low. Purchase a good planer, joiner, and bandsaw.

I don't know that the entire parking lot needs to be redone. If it is the stripes for the parking spaces should be angled.

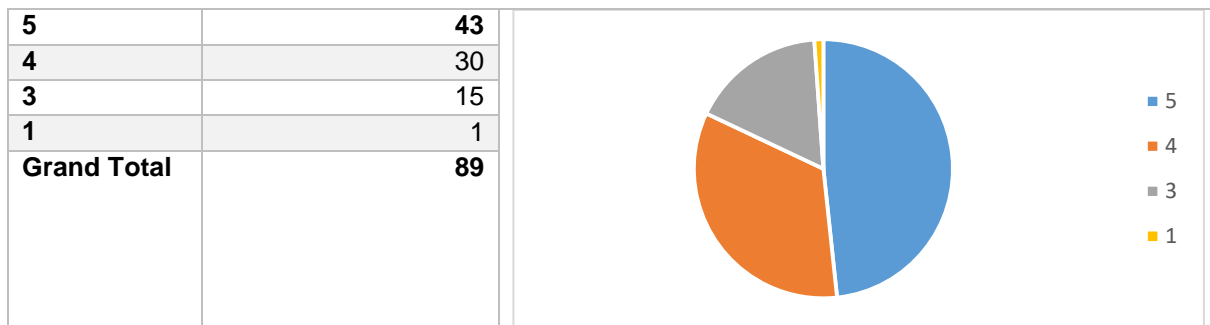
To me improving the lobby is the most important thing. It's the first thing a visitor notices when they enter.

A MAME machine would be a good addition to the lobby and an awesome group project.

Governance

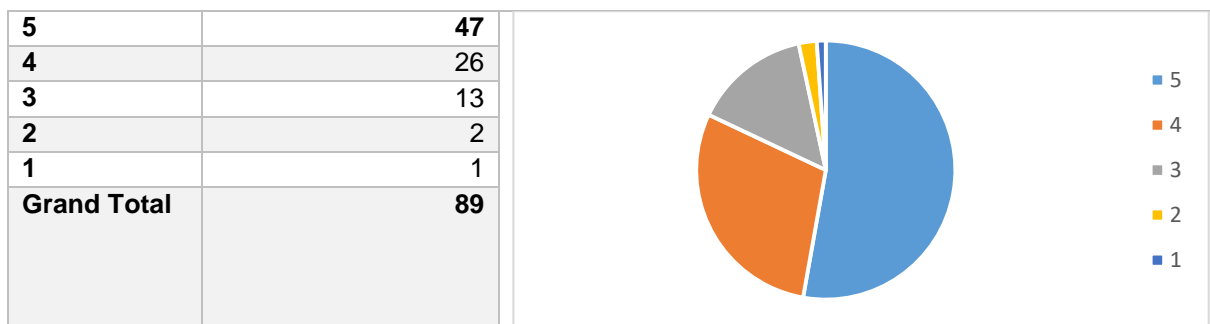
How satisfied are you with decisions the Board has made in the past year?

5 = very satisfied, 1= Not at all satisfied



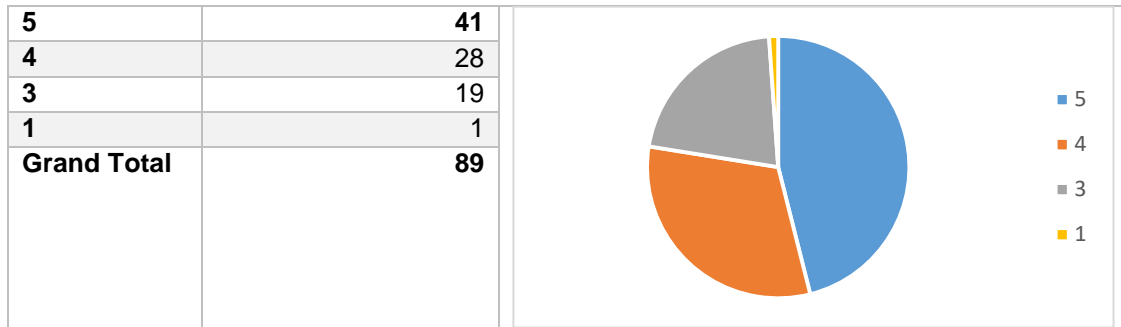
How satisfied are you with the Board's transparency in the past year?

5 = very satisfied, 1= Not at all satisfied



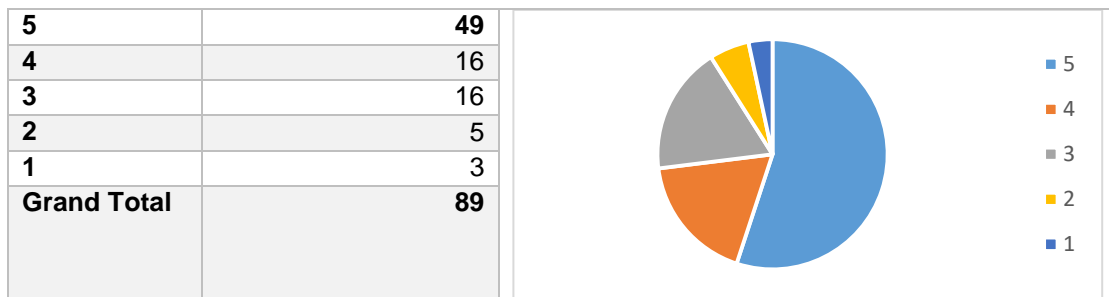
How satisfied are you with the way discussions have been handled by the Board in the past year?

5 = very satisfied, 1= Not at all satisfied



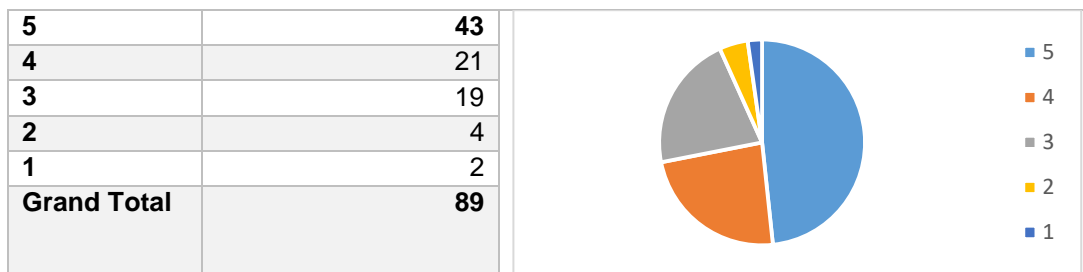
How comfortable are you presenting proposals and ideas to the Board of Directors?

5 = very satisfied, 1= Not at all satisfied



How comfortable are you presenting proposals and ideas to the Membership as a whole?

5 = very satisfied, 1= Not at all satisfied



Are you satisfied with the policies and procedures outlined in the Milwaukee Makerspace By-Laws and member handbook?

5 = very satisfied, 1= Not at all satisfied

